

MODULE FIVE

Water Quality Testing

Fun Facts about Water

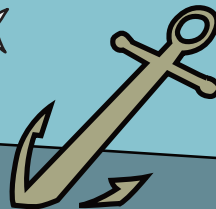
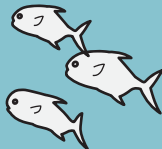
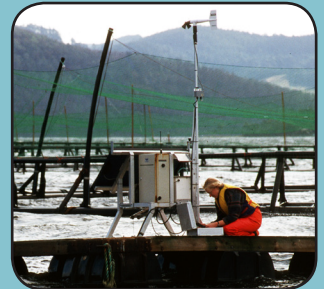
- A watershed, defined as the area of land where all of the water below it, or water that drains off of it, goes to the same place. Watersheds come in all shapes and sizes. They cross county, state and national boundaries. The continental US has 2,110 watersheds and 2,267 including Hawaii, Alaska and Puerto Rico.
- Scientists measure salinity, the amount of salt content in a body of water, in Parts Per Thousand (PPT).
- Types of plants and animals that live in a body of water can be greatly influenced by salinity.

Environmental Connection

Water covers over 70% of Earth's surface and less than 1% of that can be deemed drinkable. Polluted runoff caused by rainfall and snowmelt moving over and through the ground, picks up and carries with it, natural and human-made pollutants, depositing them into lakes, rivers, wetlands, coastal waters and even our underground sources of drinking water. Observe where the water goes the next time you have a heavy rain.

What can you observe in your local waters?
(waves, streams, inlets, tides)

Describe your local watershed. Where does the water come from and where does it go?



Water Testing Chart

	Sample 1	Sample 2	Sample 3	Sample 4	Sample 5
Description Location/ Depth					
Temperature (°F)					
Salinity (PTT)					
Specific Gravity (SG)					
pH					
Turbidity Inches, cm					

