

## 2019 U.S. Youth Sailing Championship

June 21 - 25, 2019

Organizing Authority US Sailing  
Hosted by Little Egg Harbor Yacht Club, Beach Haven NJ

### Sailing Instructions

*The notation [NP] in a rule means, that the rule shall not be grounds for protest by a boat; and [DP] in a rule means that the penalty for a breach of that rule may, at the discretion of the protest committee, be less than disqualification.*

#### 1 RULES

- 1.1 The regatta will be governed by the rules as defined in The Racing Rules of Sailing (RRS).
- 1.2 The following documents shall apply:
  - 1.2.1 US Sailing Regulation 10 - Prohibited Substances. An alleged breach of US Sailing Regulation 10 shall not be grounds for a protest by another boat. However, when a protest committee believes that a competitor may have breached Regulation 10.03 it shall follow the process described in the Championships Code of Conduct.
  - 1.2.2 The Conditions for the Youth Championship and the US Sailing Championship Conditions.
  - 1.2.3 The US Sailing Championship Coaching and Support Vessel Policy. This will be a Grade 1 Coaching event.
  - 1.2.4 US Sailing SafeSport Program Handbook
  - 1.2.5 SI Attachment C – Position Boxes for Coaches and Spectators
  - 1.2.6 SI Attachment D – Instructions for Coach, Support, and Spectator Vessels
- 1.3 RRS 40 is changed such that each competitor shall wear a USCG approved life jacket that is 100% dependent on foam for flotation and the appropriate size for the sailor, at all times while on the water, except for brief periods while adding or removing clothing. [DP]
- 1.4 RRS 77 is changed so that a boat is not required to display national letters. However, competitors shall be required to comply with applicable class sail numbering rules.

#### 2 NOTICES TO COMPETITORS

- 2.1 Notices to competitors (including protest notifications) will be posted on the official notice board located on the water side of the clubhouse, on the first floor under the porch.
- 2.2 All questions to the race committee, protest committee, or organizing authority must be made in writing and will be posted and answered on the official notice board.

#### 3 CHANGES TO SAILING INSTRUCTIONS

- 3.1 Changes to the SIs will be posted no later than 30 minutes after the close of the morning competitors' meeting on the day it takes effect, except that any change to the schedule of races will be posted no later than 1900 the day before a change will take effect.

#### 4 SIGNALS MADE ASHORE

- 4.1 Signals made ashore will be displayed from the flagpole on the north end of "D" dock.
- 4.2 When flag AP is displayed ashore, the warning signal for the next race will be made not less than 60 minutes after AP is lowered. This changes RRS Race Signals.
- 4.3 Flag D with one sound means 'The warning signal will be made not less than 60 minutes after flag D is displayed. Boats shall not leave the harbor until this signal is made. [DP]

## 5 SAFETY [DP] [NP]

- 5.1 All competitors are required to “chip out” and “chip in” anytime they are on the water. This includes any practice or other activities. If scanner is not available or a competitor is going out alone, they shall notify a dock master before launching and after returning onshore.
- 5.2 Any boat retiring from racing shall notify any race committee vessel before leaving the course and check-in with any dockmaster immediately upon arrival onshore.

## 6 SCHEDULE

6.1 The schedule is as follows:

| Date/Time           | Event                              | Location                                |
|---------------------|------------------------------------|---|
| Friday, June 21st   |                                    |   |
| 1000 – 1800         | Registration                       | Commodore’s Room, 2 <sup>nd</sup> floor |
| 1200 – 1700         | Designated Optional Practice Time  |   |
| 1800                | Mandatory Coaches Meeting          | Front dock, water side of the clubhouse |
| Saturday, June 22nd |                                    |   |
| 0800 - 0900         | Registration                       | Commodore’s Room, 2 <sup>nd</sup> floor |
| 0930                | Mandatory Competitors Meeting      | Front dock, water side of the clubhouse |
| 1000                | Mandatory Spectator Vessel Meeting |   |
| 1200                | Warning Signal for both courses    |   |
| Sunday, June 23rd   |                                    |   |
| 0900                | Mandatory Competitors Meeting      | Front dock, water side of the clubhouse |
| 1100                | Warning Signal for both courses    |   |
| Monday, June 24th   |                                    |   |
| 0900                | Mandatory Competitors Meeting      | Front dock, water side of the clubhouse |
| 1100                | Warning Signal for both courses    |   |
| Tuesday, June 25th  |                                    |   |
| 0800                | Mandatory Competitors Meeting      | Front dock, water side of the clubhouse |
| 1000                | Warning Signal for both courses    |   |
| 1400                | No Warning Signal after this time  |   |
| As soon as possible | Boat pack up & Awards Ceremony     | Commodore’s Room, 2 <sup>nd</sup> floor |

6.2 Fourteen (14) races are scheduled for the 29er and Nacra classes. Twelve (12) races are scheduled for the Laser, Radial and I 420 classes. The race committee may run fewer races at its discretion.

## 7 CLASS FLAGS

7.1 The class flags are as follows:

| Class  | Class Flag                            |
|--------|---------------------------------------|
| Laser  | White flag with a red Laser insignia  |
| Radial | Yellow flag with a red Laser insignia |
| I 420  | Red & Blue stripe with I 420 insignia |
| 29er   | White flag with black 29er insignia   |
| Nacra  | White flag with black Nacra insignia  |

## 8 RACING AREA

8.1 The racing area is in Little Egg Harbor, west of Little Egg Harbor Yacht Club. See Attachment A.

- 8.2 The assignment of classes to Area A or B will be announced at the morning competitors' meeting each day and will be posted on the official notice board no later than 30 minutes after the close of the morning competitors' meeting. On the water, the race committee may use Flag L to change the racing area.

## 9 THE COURSES

- 9.1 The diagrams in Attachment B show the courses, including the order in which marks are to be passed.  
 9.2 All rounding marks shall be left to port, except Marks 3S/3P and Marks 4S/4P which are gates.  
 9.3 The race committee signal vessel shall post the course to be sailed on a white board or placard.  
 9.4 If one of the gate marks is missing, the mark in position will be rounded to port.

## 10 MARKS

|                           | Start Mark      | Marks 1, 2         | New Marks 1, 2     | Offset Mark 1a | Marks 3s, 3p, 4s, 4p | Finish Line Mark |
|---------------------------|-----------------|--------------------|--------------------|----------------|----------------------|------------------|
| Trapezoid Course          |                 |                    |                    |                |                      |                  |
| Laser, Radial, I 420      | Orange cylinder | Orange tetrahedron | Orange cylinder    | Orange ball    | Yellow tetrahedron   | Orange cylinder  |
| Windward / Leeward Course |                 |                    |                    |                |                      |                  |
| Nacra                     | Yellow cylinder | Yellow cylinder    | Yellow tetrahedron |                | Orange cylinder      | Yellow cylinder  |
| 29er                      |                 | Orange cylinder    | Orange tetrahedron |                |                      |                  |

## 11 THE START

- 11.1 Races will be started using RRS 26.  
 11.2 The starting line will be between a staff displaying an orange flag on the race committee signal vessel and a staff displaying an orange flag on the pin vessel **or** the course side of the Start Line Mark (see SI 10).  
 11.3 To alert boats that a race will begin soon, the orange line flag on the signal vessel will be displayed with multiple sounds, at least 4 minutes before the warning signal is displayed.  
 11.4 In addition, after a race, the race committee intends to post the sail numbers of boats that are to be scored as OCS, UFD, ZFD, or BFD. This is a courtesy only and failure of the race committee to make this posting shall not be grounds for redress.  
 11.5 A boat starting later than 4 minutes after her starting signal will be scored DNS. This changes RRS 35 and A5.

## 12 COURSE CHANGES

- 12.1 To change the next leg of the course, the race committee will (a) lay a new mark, (b) move the finishing line, or (c) move the leeward gate (original marks). When a new mark is laid, the original mark will be removed as soon as possible. When in a subsequent change a new mark is replaced, it will be replaced by an original mark.  
 12.2 The race committee may make minor adjustments in the course without signaling a change of course. This changes RRS 33.

### 13 THE FINISH

- 13.1 The finishing line will be between a staff displaying an orange flag on the finish line vessel and a staff displaying an orange flag on the pin vessel or the course side of the nearby Finish Line Mark (see SI 10).

### 14 TIME LIMITS

- 14.1 The following time limits apply (in minutes):

| Class                | Time limit | Mark 1 time limit | Finish window |
|----------------------|------------|-------------------|---------------|
| Laser, Radial, I 420 | 75         | 20                | 15            |
| 29er, Nacra          | 75         | 20                | 15            |

- 14.2 If no boat has passed Mark 1 within the Mark 1 Time Limit, the race shall be abandoned.
- 14.3 Boats still racing and failing to finish within 15 minutes after the first boat in their class sails the course and finishes will be scored TLE and will be scored 2 more points than the last finisher within the finish window in that race. This changes RRS 35, A4.2, A5 and A11.

### 15 PENALTY SYSTEM

- 15.1 RRS Appendix P, Special Procedures for Rule 42, shall apply.
- 15.2 For the 29er and Nacra classes, RRS 44.1 and P2.1 are changed such that the Two-Turns penalty is replaced by a One-Turn Penalty.
- 15.3 RRS/US Appendix V2, Penalty Taken After the Race, will apply modified such that the written notice shall be delivered to the protest desk (see SI 16.1).

### 16 PROTESTS, REQUESTS FOR REDRESS, SCORING INQUIRIES

- 16.1 Protest forms, scoring inquiry forms, and penalty acceptance forms will be available at, and shall be delivered to the protest desk. After racing and prior to the protest time limit, the protest desk will be located in the Gazebo on the north side of the main Clubhouse. At other times, the protest desk will be located in the Junior Clubhouse on the south side of the main Clubhouse.
- 16.2 When the race committee receives a scoring inquiry form, it will review its records and respond as soon as practicable.
- 16.3 The protest time limit is 45 minutes after the race committee signal vessel docks. The race committee will post the protest time limit.
- 16.4 A boat may not protest another boat for an alleged breach of any class rule other than class equipment measurement rules. This changes 60.1(a). [NP]
- 16.5 Notice of actions taken by the race committee will be shown in the posted results. Notice of actions taken by the protest committee and a list of boats penalized under Appendix P will be posted on the official notice board.
- 16.6 Notices of protests by the race committee or protest committee will be posted to inform boats under RRS 61.1(b).
- 16.7 As soon as practicable after a protest or request for redress has been filed, the protest committee will post a notice to inform competitors of the schedule and location of hearings in which they are parties or named as witnesses.
- 16.8 On the last scheduled day of racing a request for redress based on a protest committee decision shall be delivered no later than 30 minutes after the decision was posted. This changes RRS 62.2.

### 17 SCORING

- 17.1 The Low Point System of Appendix A will apply with the following changes:
- 17.1.1 When fewer than 5 races have been completed, a boat's series score will be the total of her race scores.
- 17.1.2 When 5 or more races have been completed, a boat's series score will be the total of her race scores excluding her worst score.

17.2 Three (3) races are required to be completed to constitute a series.

#### **18 REPLACEMENT OF CREW OR EQUIPMENT [DP]**

18.1 Substitution of competitors, or repair or replacement of hulls, sails, or equipment will not be allowed without prior written approval of the organizing authority. See [US Sailing Championship Conditions](#).

#### **19 COACH, SPECTATOR AND SUPPORT VESSELS [DP] [NP]**

19.1 This is a Grade 1 Event as defined in the US Sailing [Championship Coaching and Support Vessel Policy](#).

19.2 Private Spectator Vessels will be permitted. All spectator vessels must fly a supplied flag when near the course area. A regatta supplied spectator vessel may be available for at least one day of racing.

19.3 Please refer to Attachments C and D for further instructions and specific conditions.

#### **20 DISPOSAL OF TRASH [DP]**

20.1 Boats shall not purposefully discharge trash into the water.

#### **21 ELECTRONIC COMMUNICATION [DP]**

21.1 A competitor shall not send or receive electronic communications from the time he or she leaves the dock until after the last race of the day.

#### **22 DISCIPLINE [DP] [NP]**

22.1 Competitors are considered to be attending the championship from the moment that they arrive at the venue until they leave the venue for home or the airport.

22.2 Per US Sailing Regulations 10.03 B, no contestant shall use, either on or off the water, marijuana or any other substance if possession is illegal under state or federal law; or any alcoholic beverages. This regulation shall be in effect from date and time of arrival through date and time of departure from the locale and including transport to and from the locale. An alleged breach of one of these regulations shall not be grounds for a protest. However, when the protest committee believes that a competitor may have breached one of these regulations, it shall follow the process described in the Championships Code of Conduct. If a competitor is found to have breached one of the elements within the Code of Conduct, they shall be excluded from the remaining races of the series and, where practicable, removed from the regatta venue and sent home. The competitor's boat shall be disqualified from all races of the series.

22.3 All competitors are expected to maintain the highest level of conduct throughout the entire event. RRS 60.3 is modified to permit the protest committee to protest a boat when, from its own observations or a report received from any source, it believes that a competitor may have committed a breach of good manners, or sportsmanship, or may have brought the sport or the event into disrepute. RRS 64.1 is changed to allow penalties for breaking this provision to range from a reprimand to a dismissal from the regatta. For a hearing under this provision, the protest committee shall call the Youth Championship Committee (YCC) Chairperson or his or her designee and the Regatta Chairperson as witnesses.

#### **23 PRIZES**

23.1 Depending on class size, US Sailing Championship medals may be awarded to competitors who finish first through fifth overall in classes greater than 25 and first through third overall in classes greater than ten. In classes with ten or less, first and second will be awarded.

23.2 The Manton D Scott Memorial Trophy will be awarded to the winning Doublehanded Dinghy (I 420) team.

23.3 The Robert L. Johnstone III Trophy will be awarded to the winning Open Singlehanded (Laser Standard) competitor.

23.4 The Robert and Ann Conner Trophy will be awarded to the winning Singlehanded – Light (Laser Radial) competitor.

- 23.5 The Arthur J. Stevens Trophy will be awarded to the winning Multihull team.
- 23.6 The David M. Perry Perpetual Sportsmanship Trophy will be awarded, as well as sportsmanship keepers, in each class.
- 23.7 International Travel Grants - Made possible by the US Sailing Foundation. The top finishing doublehanded team or singlehanded sailor, as well as the top female doublehanded team or singlehanded sailor, in each fleet at the 2019 Youth Champs are eligible for travel grants of up to \$500 per athlete to represent the United States at an international competition (outside of North America) in 2020, subject to approval. Eligible sailors will be required to submit details of the international competition and a training plan to US Sailing (championships@ussailing.org) for approval by April 1st, 2020.

#### **24 RISK, DISCLAIMER OF LIABILITY & PERSONAL CONDUCT**

- 24.1 Competitors participate in the regatta at their own risk. See RRS 4 (Decision to Race). The organizing authority will not accept any liability for material damage or personal injury or death sustained in conjunction with or prior to, during, or after the regatta.
- 24.2 The competitor will accept full responsibility for all his/her actions during any activity related to the event. This includes on-shore activities before, during, and after the regatta.
- 24.3 All competitors are expected to maintain the highest levels of conduct throughout the entire event. Enforcement of discipline and conduct shall be conducted as per RRS 69.1, the Championships Code of Conduct and/or the policies and procedures of US Sailing (Regulation 15.01).

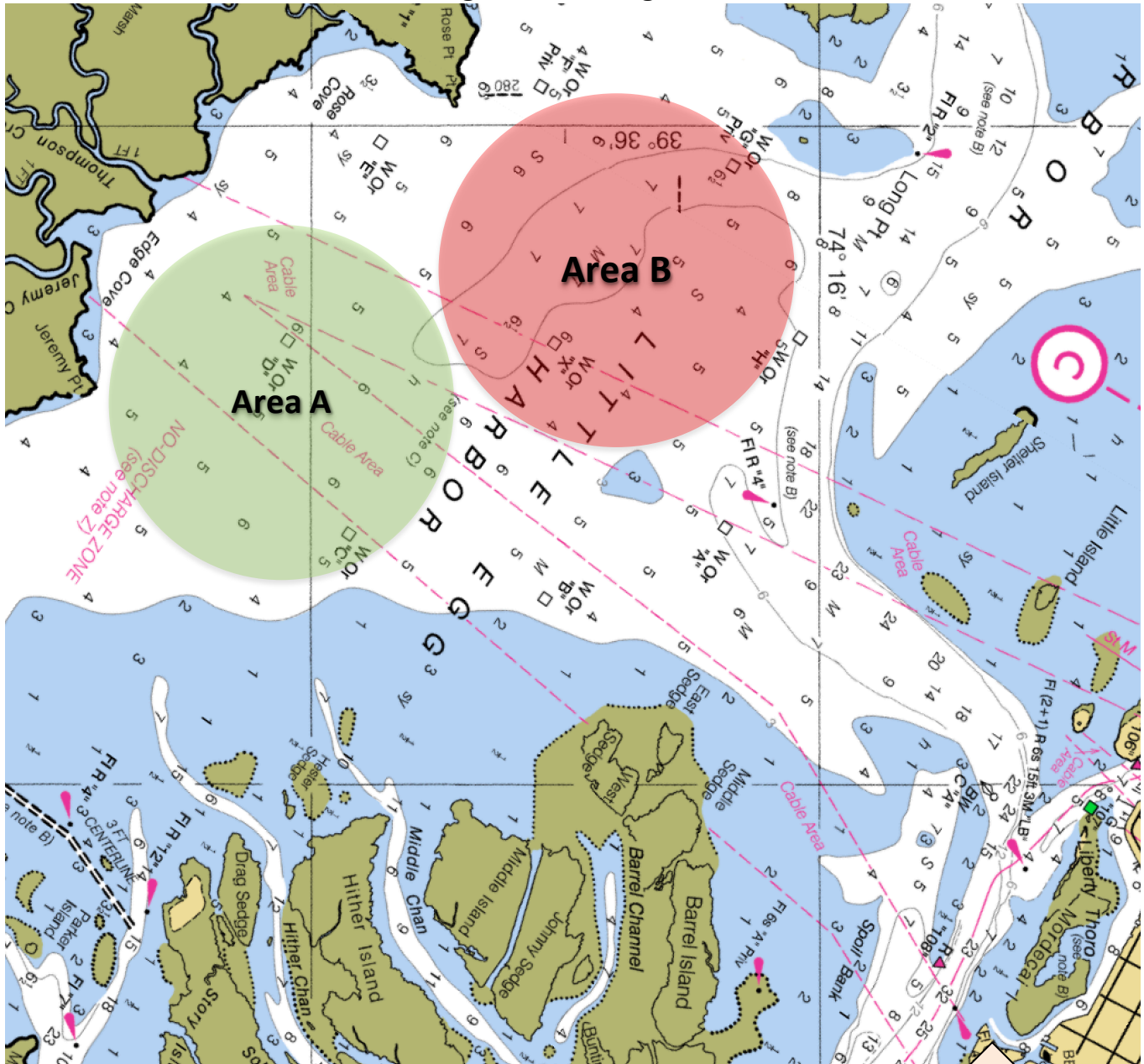
#### **25 FURTHER INFORMATION**

- 25.1 All official notices, forms, lists and results will be posted on the US Sailing website: <https://www.ussailing.org/competition/championships/u-s-youth-championship/>
- 25.2 US Sailing Youth Development Manager, Meredith Carroll, US Sailing, 1 Roger Williams University Way, Bristol, RI 02809, (401)342-7900, or [championships@ussailing.org](mailto:championships@ussailing.org)
- 25.3 US Sailing Youth Championships Committee Chair, Boo Caraway at [boo.caraway@wrightsvillebch.com](mailto:boo.caraway@wrightsvillebch.com)

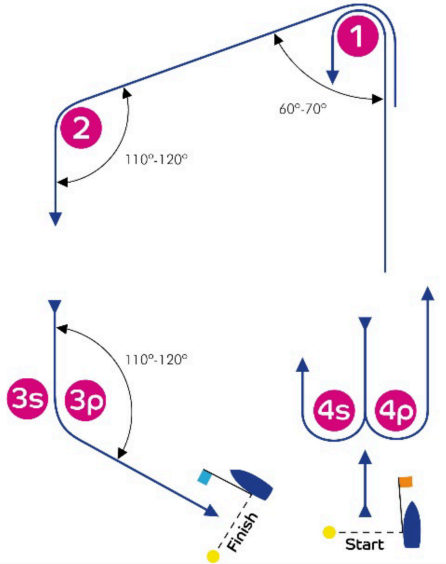


**ATTACHMENT A – Venue**

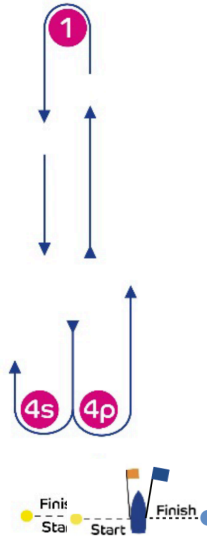
**Diagram A: Racing Area**



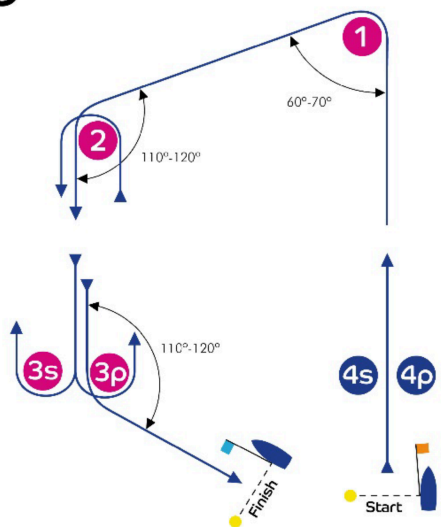
Little Egg Harbor  
Yacht Club

**ATTACHMENT B – Courses**
**I**

**Course: Inner Trapezoid**

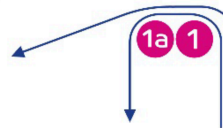
| Signal | Mark Rounding Order   |
|--------|---|
| I2     | Start - 1 - 4s/4p - 1 - 2 - 3p - Finish                         |
| I3     | Start - 1 - 4s/4p - 1 - 4s/4p - 1 - 2 - 3p - Finish             |
| I4     | Start - 1 - 4s/4p - 1 - 4s/4p - 1 - 4s/4p - 1 - 2 - 3p - Finish |

**L**

**Course: Windward/Leeward**

| Signal | Mark Rounding Order                                    |
|--------|--|
| L2     | Start - 1 - 4s/4p - 1 - Finish                         |
| L3     | Start - 1 - 4s/4p - 1 - 4s/4p - 1 - Finish             |
| L4     | Start - 1 - 4s/4p - 1 - 4s/4p - 1 - 4s/4p - 1 - Finish |

**O**

**Course: Outer Trapezoid**

| Signal | Mark Rounding Order   |
|--------|---|
| O2     | Start - 1 - 2 - 3s/3p - 2 - 3p - Finish                         |
| O3     | Start - 1 - 2 - 3s/3p - 2 - 3s/3p - 2 - 3p - Finish             |
| O4     | Start - 1 - 2 - 3s/3p - 2 - 3s/3p - 2 - 3s/3p - 2 - 3p - Finish |

**IA**

**Course: Same as Course I except with Offset Mark 1A**

| Signal | Mark Rounding Order   |
|--------|---|
| IA2    | Start - 1 - 1a - 4s/4p - 1 - 1a - 2 - 3p - Finish                                   |
| IA3    | Start - 1 - 1a - 4s/4p - 1 - 1a - 4s/4p - 1 - 1a - 2 - 3p - Finish                  |
| IA4    | Start - 1 - 1a - 4s/4p - 1 - 1a - 4s/4p - 1 - 1a - 4s/4p - 1 - 1a - 2 - 3p - Finish |

**LA**

**Course: Same as Course L except with Offset Mark 1A**

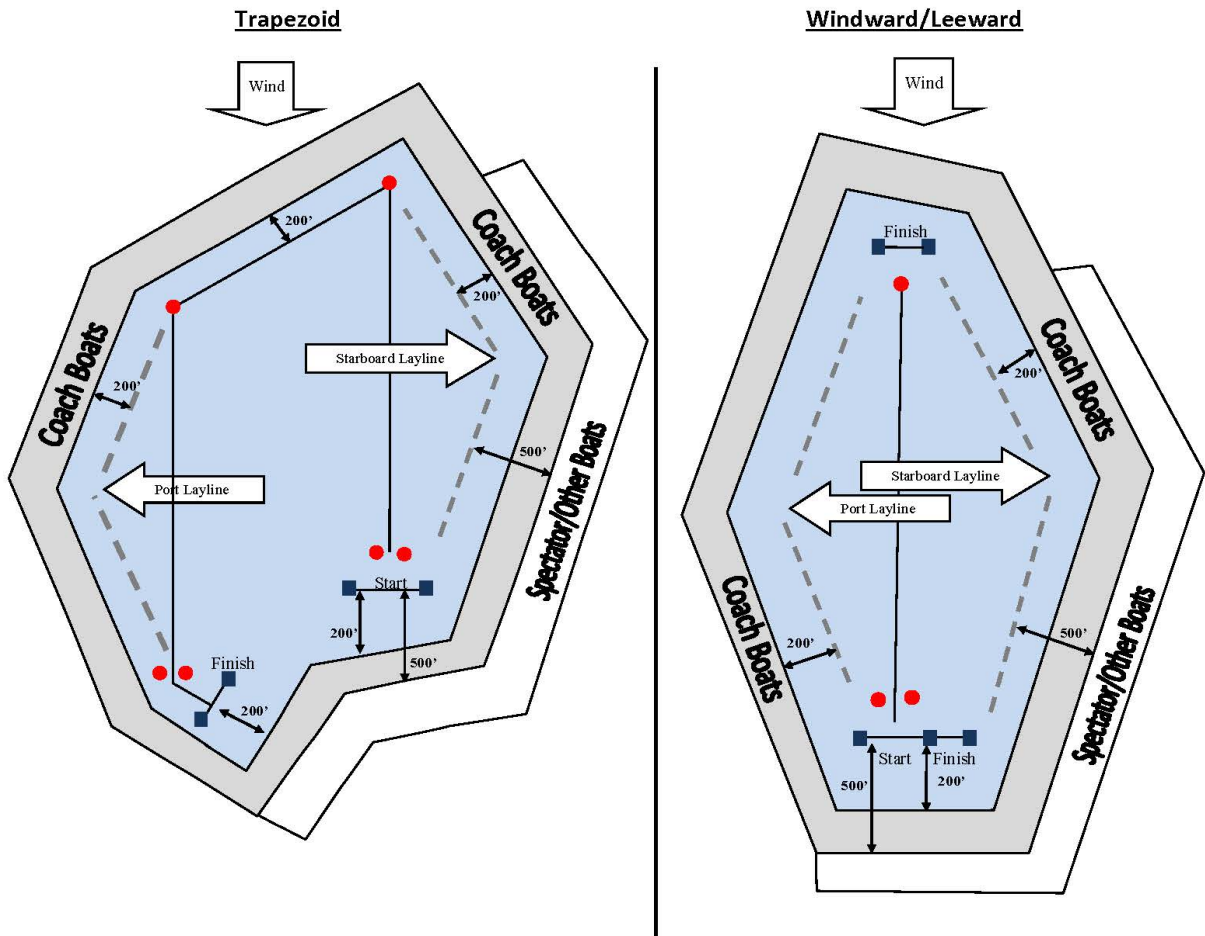
| Signal | Mark Rounding Order   |
|--------|---|
| LA2    | Start - 1 - 1a - 4s/4p - 1 - 1a - Finish  |
| LA3    | Start - 1 - 1a - 4s/4p - 1 - 1a - 4s/4p - 1 - 1a - Finish                                   |
| LA4    | Start - 1 - 1a - 4s/4p - 1 - 1a - 4s/4p - 1 - 1a - 4s/4p - 1 - 1a - 4s/4p - 1 - 1a - Finish |



**Attachment C**  
**Position Boxes for Coaches and Spectators**

**Coach Boats** – 200' from laylines / above windward mark / below start-finish areas

**Spectator / Support Boats** – Limited to starboard side of the course - 500' from laylines / below windward mark / below start finish areas



## Attachment D

### Instructions for Coach, Support and Spectator Vessels

- D1 The objective of this attachment is to augment the safety resources attached to the regatta and to provide a clear and fair racing area.
- D2 From the warning signal for the first class' start until the conclusion of each race, all coach vessels and support vessels shall observe the limitation areas in Attachment C, the [US Sailing Championships Coaching and Support Vessel Policy](#) and as spelled out in this document.
- D2.1 A coach vessel is authorized by the organizing authority to provide athlete support. Coach vessel occupants must meet the requirements of the [US Sailing Championships Coaching and Support Vessel Policy](#). The vessel shall display the numbered coach flag assigned at registration.
- D2.2 A support vessel is authorized by the organizing authority to be in the racing area to provide safety, medical, water, photographic or other assistance to competitors as requested by the race committee. They will be assigned a numbered flag.
- D2.3 A spectator vessel (those vessels not designated as race committee, coach or support) is in the racing area for the purpose of observing racing. At no time shall spectator vessels enter the area being used by the racing boats. A spectator vessel must stay 500 feet outside the race course and is limited to the right side of the course, as shown in Attachment C. The vessel shall display the numbered spectator flag assigned at registration.
- D3 All coach and spectator vessels must register through the event registrar. Private coaches wishing to be part of the event must also register with the US Sailing head coach and agree to work under their direction and be a member of the overall event coaching team.
- D4 All designated coach, support and spectator vessels shall conspicuously display, at all times while on the water, the flag assigned to them. Additionally, from the first preparatory signal of the day until racing concludes, coach, spectator and support vessels shall display no other flag, signal or shape.
- D5 Coach, support and spectator vessels shall monitor the VHF channel as provided by the race committee at the competitors' meeting and shall immediately follow all instructions from the race committee and the organizing authority. At no time shall any spectator, coach or support vessel interfere in the conduct of the race. At no time during a race shall any competitor approach or signal a coach or spectator vessel, nor shall a coach or spectator vessel approach or signal any competitor.
- D6 The race committee reserves the right to restrict coach vessels and spectator vessels to a box below the starting line for the entire race and / or make any other rules to ensure the quality of the racing and the safety of the competitors.