



# U.S. ADULT SAILING CHAMPIONSHIP



for the Clifford D. Mallory Trophy  
September 5-8, 2019



Marion, MA  
Organizing Authority (OA): US Sailing  
Host: Beverly Yacht Club



<https://www.ussailing.org/competition/championships/2019-u-s-adult-sailing-championship/>

## SAILING INSTRUCTIONS (SI)

The notation '**[DP]**' in a rule in the sailing instructions (SIs) or notice of race (NoR) means that the penalty for a breach of that rule may, at the discretion of the protest committee, be less than disqualification. The notation '**[NP]**' in a rule of the SIs or NoR means that a boat may not protest another boat for breaking that rule. This changes RRS 60.1(a). The notation '**[QP]**' in a rule of the SIs or NoR means that the penalty for breaking that rule will be handled in accordance with SI Addendum Q4.1 or Q5.

### 1 RULES

- 1.1 The regatta will be governed by the *rules* as defined in *The Racing Rules of Sailing* (RRS).
- 1.2 US Sailing prescription to RRS 63.4 will not apply.
- 1.3 The following additional documents will govern the event:
  - (a) US Sailing Conditions of the US Adult Sailing Championship  
(<https://www.ussailing.org/wp-content/uploads/2019/01/New-Adult-Conditions-2019.pdf>);
  - (b) US Sailing Championship Conditions  
(<https://www.ussailing.org/competition/resources/championship-conditions/>);
  - (c) US Sailing Regulations 2, 10, 14 and 15  
(<https://www.ussailing.org/wp-content/uploads/2018/02/RegsAmended2017-12-18.pdf>);
  - (d) US Sailing Safe Sport Handbook  
(<https://www.ussailing.org/competition/resources/safesport-us-sailing/>);
  - (e) US Sailing Championships Code of Conduct  
([https://www.ussailing.org/wp-content/uploads/2018/01/FinalChampionships\\_CodeofConduct3-21-17-1.pdf](https://www.ussailing.org/wp-content/uploads/2018/01/FinalChampionships_CodeofConduct3-21-17-1.pdf));
  - (f) US Sailing Coaching and Support Boat Policy  
(<https://www.ussailing.org/competition/resources/coaching-and-support-boat-policy/>);
  - (g) World Sailing Addendum Q, Umpired Fleet Racing  
([https://www.sailing.org/tools/documents/AddendumQversion20190101-\[24621\].pdf](https://www.sailing.org/tools/documents/AddendumQversion20190101-[24621].pdf));
  - (h) SI Attachments A, B, C, D, E, and F.
- 1.4 [QP] Competitors shall wear a personal flotation device approved by the U.S. Coast Guard (or for international competitors, the equivalent authority of their home country) at all times while on the water, except for brief periods while adding or removing clothing. This changes RRS 40 and the preamble to RRS Part 4.

1.5 RRS 31 is changed to "While racing, neither the crew nor any part of a boat's hull shall touch a starting mark before starting, a mark that begins, bounds or ends the leg of the course on which she is sailing, or a finishing mark after finishing. In addition, while racing, a boat shall not touch a race committee vessel that is also a mark."

1.6 The event is being sailed in J/80 type boats provided by the OA. The J/80 class rules do not apply. SI Attachment A, Rules for Handling Boats apply at all times while competitors are aboard the boats, including practice sessions.

## 2 COMMUNICATIONS WITH COMPETITORS

2.1 Notices to competitors will be posted on the official notice board located on the bulletin board on the porch at BYC.

2.2 The race committee intends to use VHF Channel 72 to communicate with competitors while on the water (see NoR 1.3).

2.3 [DP] Skippers shall attend the daily morning briefing held on the porch at BYC.

2.4 Except in an emergency, a boat will neither make radio transmissions while racing nor receive radio communications not available to all boats. This restriction also applies to mobile devices. [DP]

## 3 CHANGES TO SAILING INSTRUCTIONS

3.1 Changes to the SIs made ashore will be posted no later than 30 minutes before the start of the first race in which they take effect, except that any change to the schedule of races will be posted by 2000 on the day before it will take effect.

3.2 In compliance with RRS 90.2(c), changes to the SIs may be made on-the-water by displaying flag L from the race committee signal boat with a sound signal. The race committee will announce the change on VHF Channel 72. The umpires may assist with notifying the boats.

## 4 SIGNALS MADE ASHORE

4.1 Signals made ashore will be displayed from the BYC flagpole.

4.2 When flag AP is displayed ashore, '1 minute' is replaced with 'not less than 30 minutes' in the race signal AP.

## 5 SCHEDULE OF EVENTS

5.1 The schedule for the regatta is as follows:

Date	Time	Event
Wed, Sept 4	1000-1700	Registration & Weigh-In
	1200-1700	Boats available for practice
Thur, Sept 5	0800-0900	Late Check-In
	0900	Daily Briefing
	1100	First warning
	after racing	Social at Beverly Yacht Club
Fri, Sept 6	0800	Daily Briefing
	TBD	First warning
	after racing	on own
Sat, Sept 7	0800	Daily Briefing
	TBD	First warning
	after racing	Social at Beverly Yacht Club
Sun, Sept 8	0800	Daily Briefing
	TBD	First warning
	1430	No initial warning signal after 1430
	after racing	Social & awards at Beverly Yacht Club

## 6 RACING AREAS

6.1 SI Attachment B shows the location of racing areas.

## 7 FORMAT AND BOAT ASSIGNMENTS

7.1 SI Attachment E describes the format for racing.

7.2 SI Attachment F shows the assignment of teams to boats and will be distributed to teams at the first morning briefing.

## 8 THE COURSES

- 8.1 The courses will be windward/leeward courses. The diagram shows the course layout, the order in which marks are to be passed, and the side on which each mark is to be left.

---

W4 Start, 1, 2, 1, Finish

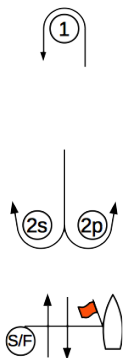
---

W2 Start, 1, Finish

---

W6 Start, 1, 2, 1, 2, 1, Finish

---



- 8.2 Courses will not be shortened. This changes RRS 32.
- 8.3 [QP] When flag V is displayed on the race committee signal vessel prior to the warning signal, boats shall not use spinnakers in that race.

## 9 MARKS

- 9.1 The starting/finishing mark will be an orange inflatable mark or a staff displaying an orange flag on a race committee vessel at the port end of the line.
- 9.2 Mark 1 will be an orange inflatable mark.
- 9.3 Marks 2s and 2p will be yellow inflatable marks.
- 9.4 Change mark 1, as provided in SI 12.1, will be a yellow inflatable mark.

## 10 AREAS THAT ARE OBSTRUCTIONS

- 10.1 See SI Attachment B.

## 11 THE START

- 11.1 Races will be started by using SI Attachment C, Sound-Signal Starting System. This replaces RRS 26.
- 11.2 The starting line will be between a staff displaying an orange flag on the race committee signal vessel and the course side of the starting/finishing mark or a staff displaying an orange flag on a race committee vessel at the port end of the line
- 11.3 A boat failing to start within 3 minutes after her starting signal will be scored Did Not Start (DNS). This changes RRS A4.1.

## 12 CHANGE OF THE NEXT LEG OF THE COURSE

- 12.1 Change of course will follow RRS 33, except changes in direction of less than 10 degrees of course completed before any boat begins the leg may not be signaled.

## 13 THE FINISH

- 13.1 The finishing line will be between a staff displaying an orange flag on the race committee signal vessel and the course side of the starting/finishing mark.

## 14 PENALTY SYSTEM

- 14.1 World Sailing Addendum Q, Umpired Fleet Racing will apply.
- 14.2 When the umpires decide that a boat has broken RRS 14 in an incident where there is damage, they may impose score penalties in accordance with SI Attachment D without a hearing. The boat(s) shall be informed as soon as practical and may request a hearing, in which case the umpires shall report the incident to the protest committee who shall proceed in accordance with Q5.3. Any penalty decided by the protest committee may be more than the penalty imposed by the umpires. This changes RRS 64.1 and A4. A boat may still protest another boat under rule 14 in accordance with Q2.4(b).

## 15 TIME LIMITS AND TARGET TIMES

- 15.1 The target time for a race will be 15 minutes.
- 15.2 The time limit for a race is 25 minutes.
- 15.3 Boats failing to finish within 5 minutes after the first boat sails the course and finishes will be scored Did Not Finish without a hearing. This changes RRS 35, A4 and A5.

## 16 PROTESTS AND REQUESTS FOR REDRESS

- 16.1 Protest forms are available at the protest desk on the porch at BYC. Protests and requests for redress shall be delivered there within the appropriate time limit.
- 16.2 The protest time limit is 30 minutes after the race committee signal vessel docks. The time limit will be posted on the notice board.
- 16.3 Notices will be posted no later than 10 minutes after the protest time limit to inform competitors of hearings in which they are parties or named as witnesses. Hearings will be held in the Regatta Room upstairs in the BYC clubhouse.

- 16.4 Notices of protests by the technical committee or protest committee will be posted to inform boats under RRS 61.1(b).

## **17 SCORING**

- 17.1 The scoring will be in accordance with RRS Appendix A as modified by SI Attachment E.
- 17.2 A minimum of 8 races for all competitors is required to constitute a regatta.

## **18 BREAKDOWN and TIME FOR REPAIRS**

- 18.1 Before the warning signal of a race or within two minutes of finishing or within five minutes of changing into a new boat, whichever is later, a boat may display a solid yellow flag to signal breakdown or damage to the boat, her sails or injury to her crew and request a delay to the next start. She shall proceed as soon as possible to a position just to leeward of the race committee boat and remain there, unless otherwise directed.
- 18.2 The time allowed for repairs will be at the discretion of the race committee.
- 18.3 After the warning signal of a race, a race will not be postponed or abandoned due to breakdown unless the breakdown signal was displayed as required by SI 18.1.
- 18.4 Failure to effect repairs in the time allowed, or breakdowns after the warning signal shall not be grounds for redress. This changes RRS 62.

## **19 [DP] REPLACEMENT OF CREW**

- 19.1 Substitution of competitors will not be allowed without prior written approval of the race committee.

## **20 EVENT ADVERTISING**

- 20.1 Boats may display event advertising supplied by the OA on the hull and sails.

## **21 OFFICIAL VESSELS**

- 21.1 Official vessels will be described at the first briefing.

## **22 PRIZES**

- 22.1 US Sailing medals will be awarded to the top three teams.
- 22.2 The first place team will be presented the Clifford D. Mallory Trophy.
- 22.3 The Staton J. Peele, Jr. Trophy voted upon by the sailors may be awarded for sportsmanship.

- 22.4 Additional prizes may be awarded at the discretion of the OA.

## **23 [NP] PROHIBITED SUBSTANCES (Per US Sailing Regulation 10.03)**

- 23.1 Per US Sailing Regulation 10.03, for the Regatta, no competitor will use or possess, either on or off the water, marijuana or any other substance if use or possession is illegal under state or federal law. An alleged breach of these regulations will not be grounds for a protest.
- 23.2. However, when PC believes that a competitor may have breached any regulation or Code of Conduct, it must follow the process described in the Championship Code of Conduct. If a competitor is found to have breached one of the elements within the Code of Conduct, he/ she will be excluded from the remaining races of the series and, where practicable, removed from the Regatta venue and sent home. The competitor's team will be disqualified from all races of the Regatta.

## **24 DISCLAIMER OF LIABILITY**

- 24.1 Competitors participate in the regatta entirely at their own risk. See RRS 4, Decision to Race. The organizing authority will not accept any liability for material damage or personal injury or death sustained in conjunction with or prior to, during, or after the regatta.
- 24.2 The organizing authority, US Sailing, Beverly Yacht Club, race committee, protest committee, sponsors, host club(s) and venue (and each of their respective officers, directors, personnel, employees, servants, contractors, officials, members, guests, volunteers, agents, representatives and all other persons in their capacity of assisting a race or related event or activity) (collectively, "race organizers") will not be responsible or liable for any action, claim, liability, loss, damage, accident or injury (including bodily injury, personal injury, permanent disability, and death) (collectively, "damages") to any person, property or boat (i) sustained in conjunction with or prior to, during, or after each race; or (ii) arising, relating or resulting from use of race facilities or participation in a race or associated activities, to the fullest extent permitted by law.

By participating, each participant (and in the case of children and minors, each participant's parent or guardian) forever releases, discharges and waives any and all actions, suits and claims whatsoever against race organizers for any damages to any person, property or boat (i) sustained in conjunction with or prior to, during, or after each race; or (ii) arising, relating or resulting from use of race facilities or participation in a race or associated activities, to the fullest extent permitted by law.

Participant further releases all race organizers from all damages whatsoever on account of any of them giving assistance, aid, care, advice, rescue, first aid, treatment or services.

## **25 PUBLICITY & PHOTOGRAPHER'S RIGHTS**

- 25.1 As a condition of participation, each participant (on behalf of him/herself and their children/minors) grant **RACE ORGANIZERS**, sponsors and their designated photographers the perpetual, irrevocable right, license and permission to use, publish and distribute the participant's name, photos, video, images, finishes, results, and statements of them and their boat and crew in all forms and media worldwide (including without limitation Internet) for any purposes whatsoever (including without limitation advertisements, promotions, public sale of pictures, etc.) without compensation or further permission.

## **26 QUESTIONS**

- 26.1 Questions regarding the NOR or SIs may be submitted in writing to the RC. Questions and written responses will be posted on the Official Notice Board.

## **27 RACE OFFICIALS**

- 27.1 Principal Race Officer:  
Mary Ellen DeFrias (US RRO)  
Race Management Advisor:  
John Siegel (US NRO)  
Chief Umpire:  
Charlie Arms (WS IU, US NU)

## SI ATTACHMENT A - Rules for Handling Boats

### A1 GENERAL

- A1.1 Each skipper is responsible for the damage or loss to their boat unless responsibility is otherwise assigned by the umpires or the jury.
- A1.2 The crew sailing the boat shall report any damage or problem with the boat, before turning over a boat to the next crew. This shall be done notifying verbally the bosun or team transfer crew during on-water boat swaps or ashore after the last race for the boat each day. The reports must include any evidence of matters which could cause damage or disadvantage to the boat in future races.
- A1.3 Any request to alter, in any way, the equipment on a boat shall be in writing and worded to permit a yes/no answer.
- A1.4 Penalties for breaking rules of this attachment are as follows:
- (a) While racing and when marked [QP], the penalty will be initiated by an umpire according to SI Addendum Q4.1.
  - (b) When marked [DMG], the breach will be considered as damage and the cost of rectification will be deducted from the damage deposit.
  - (c) Other breaches will be handled according to SI Addendum Q5.

### A2 SUPPLIED EQUIPMENT

- A2.1 Boats will be provided for all competitors, who shall not modify them or cause them to be modified in any way except as permitted in this attachment.
- A2.2 While all reasonable steps are taken to equalize the boats, variations will not be grounds for redress. This changes RRS 62.1(a).
- A2.3 The following fixed or non-fixed items, provided by the OA, are to be carried on board at all times in their designated place while sailing. Any loss shall be reported to the bosun or team transfer boat.

#### SAILS and SAILING EQUIPMENT

- Mainsail with battens
- Jib with battens
- 2 Spinnakers
- Spinnaker sheets
- 2 Jib cars

- Jib sheets
- 2 winch handles
- Backstay adjustment line
- Sprit pole
- Tack line
- Tiller extension
- Spinnaker launch bag
- Plexiglass companionway hatch board and sea hood

#### OTHER GEAR

- Bucket
- Manual bilge pump
- Tow line
- Fenders with lines
- Flares
- Anchor, chain, and line
- Outboard engine
- Working nav lights
- Local chart
- Type IV throwable
- Corrector weights

### A3 MANDATORY ACTIONS

- A3.1 All equipment provided with the boat for sailing purposes shall be in the boat while afloat.
- A3.2 Boats shall obey speed restrictions and navigation marks, while leaving or returning to the berth or mooring.
- A3.3 [DMG] At the end of each sailing day, competitors shall
- (a) roll, bag, and stow the main sail
  - (b) leave the boat in the same state of cleanliness as when first boarded that day
  - (c) using backstay control lines under slight tension to secure tiller
  - (d) clean the boat (cabin and decks), remove all trash and removing all marks and tape except tape applied to turnbuckles and for chafe protection
  - (e) cover with companionway hatch and door
- A3.4 The outboard must be securely stowed below under the cockpit behind the stairs while racing.



## **A4 PERMITTED ACTIONS**

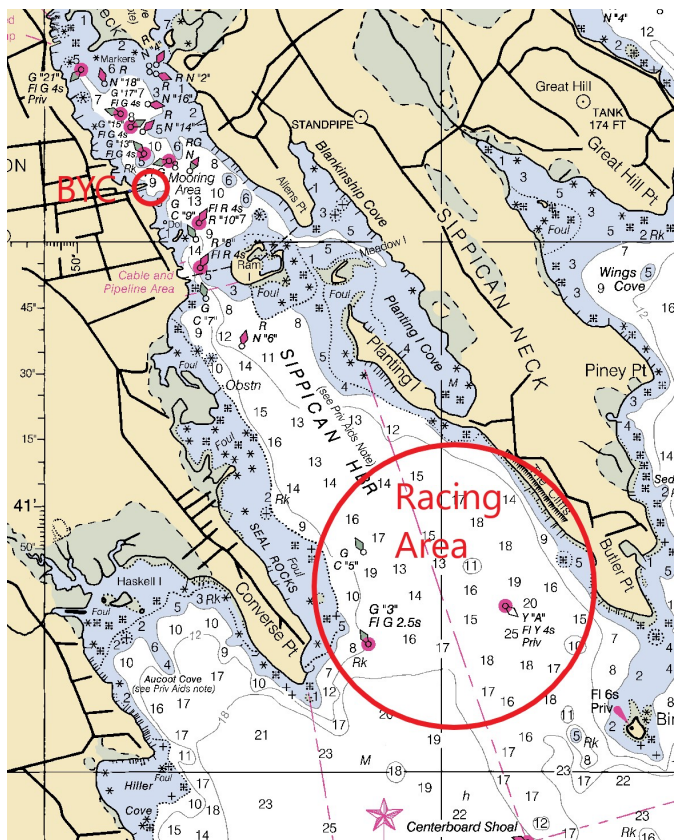
- A4.1 The following equipment may be brought aboard by competitors:
- (a) rigging tape (but not duct tape)
  - (b) line (elastic or otherwise of 4 mm diameter or less)
  - (c) marking pens or pencils
  - (d) tell tale material (not to be put on sails)
  - (e) velcro tape
  - (f) spare red protest flag
  - (g) copy of Racing Rules of Sailing, paper and writing utensil;
  - (h) digital or analog hand held compasses, watches, timers,
  - (i) handheld GPS
  - (j) binoculars
  - (k) small personal video devises such as GoPro
  - (l) VHF radio (see NoR 1.3)
  - (m) mobile phone
- A4.2 The backstay may be adjusted with the tension line but the turnbuckles may not be adjusted.
- A4.3 The jib cars may be adjusted as may the hallyard tensions, outhaul, vang, and cunningham.

## **A5 PROHIBITED ACTIONS**

- A5.1 Any additions, omissions or alterations to the hull, rudder, mast, rigging, boom, or other equipment supplied.
- A5.2 The use of any equipment for a purpose other than that intended or specifically permitted.
- A5.3 The replacement of any equipment without the sanction of the OA.
- A5.4 Sailing the boat in a manner that it is reasonable to predict that damage would result.
- A5.5 Moving equipment from its normal stowage position except when being used.
- A5.6 Boarding a boat without prior permission.
- A5.7 Taking a boat from its berth or mooring without having paid the required damage deposit or having permission from the OA, or, on race days, while flag AP is displayed ashore.
- A5.8 Hauling out a boat.

- A5.9 Cleaning surfaces below the waterline, or heeling a boat using the mast or shrouds in order to clean the hull.
- A5.10 [DMG] Marking directly on the hull, deck, sails or lines. Sail rigging tape may be used to mark control lines or the deck, provided it does not leave a residue (use of duct tape is strictly prohibited). Marking pens may be used on sail rigging tape.
- A5.11 Adjusting cockpit safety lines tension.
- A5.12 Adjusting or altering the tension of standing rigging, including the backstay turnbuckles.
- A5.13 [QP] Using a winch to adjust the mainsheet, backstay or vang.
- A5.14 [DMG] Attaching lines to the fabric of spinnakers.
- A5.15 [DMG] Perforating sails or modifying the sails in any way.
- A5.16 The use of electronic or navigation equipment, unless permitted by A4.
- A5.17 Adjusting tension of the battens.
- A5.18 Moving or removing corrector weights.
- A5.19 [QP] Roll tacking and gybing
- (a) Crew shall not use the mast, or shrouds (including any inner shrouds) to facilitate tacking or gybing, or to aid the projection of a crew member outboard.
  - (b) Crew shall not stand and lean out over the cockpit safety lines or stern rails to promote rolling the boat.
- A5.20 [QP] Bowsprit
- (a) To extend the bowsprit a boat shall be in the process of either a continuous hoist, flying or a continuous retrieval of the gennaker. At all other times the bowsprit shall be fully retracted.
  - (b) After entering the zone of a rounding mark without a spinnaker set, the bowsprit may not be extended until the bow of the boat passes the rounding mark.
  - (c) An extended bowsprit shall not be considered part of the boat for the purposes of establishing an overlap, or establishing right of way, unless the spinnaker is set.

## SI ATTACHMENT B - Racing Area



## SI ATTACHMENT C - Sound Signal Starting System

- C1 Audible signals shall govern, even when supplemental visual signals are also used.
- C2 The starting sequence shall consist of the following sound signals made at the indicated times:

Signal	Sound	Time before start
Warning	3 long	3 minutes
Preparatory	2 long	2 minutes
	1 long, 3 short	1 minute, 30 seconds
	1 long	1 minute
	3 short	30 seconds
	2 short	20 seconds
	1 short	10 seconds
	1 short	5 seconds
	1 short	4 seconds
	1 short	3 seconds
	1 short	2 seconds
Start	1 short	1 second
	1 long	0

- C3 Signals shall be timed from their commencement.
- C4 A series of short signals may be made before the sequence begins in order to attract attention. The race committee may also use VHF radio to announce a sequence.
- C5 Individual and general recalls shall be signaled in accordance with RRS 29.
- C6 Starting penalties under RRS 30 will be signaled by raising the appropriate flag prior to the warning signal and lowering it 1 minute prior to the start. This changes RRS Race Signals.



## SI ATTACHMENT D - Penalties for Damage Resulting from Contact between Boats

SI 14.2 and WS Addendum Q5.5 give umpires and the protest committee the ability to protest and penalize a boat that breaks RRS 14. This document explains how damage will be assessed and gives general guidance on the appropriate penalty. When the protest committee has good reasons to do so, it may apply a different penalty.

Damage will be divided into 3 levels as shown in the following table:

Level	Extent	Effect	Pts Penalty
Level A: Minor Damage	Does not significantly affect the value, general appearance or normal operation of the boat.	Boat may race without repair although some minor surface work may be required after the event. Repairs should not normally require more than 1 hour of work.	20%
Level B: Damage	Affects the value and/or general appearance of the boat	The damage does not affect the normal operation of the boat in that race but may need some (temporary) work before racing again. Requires more than 1 hour of work but should not normally require more than 3 hours of work.	50%
Level C: Major Damage	The normal operation of the boat is compromised and its structural integrity may be impaired.	The boat will need some repair work before racing again. Requires more than 3 hours of work.	100%

When both teams break RRS 14, they should both receive a points penalty. If a competitor requests a hearing when a points penalty is imposed, the protest committee may decide (in the hearing) to give a greater penalty.

The penalty will be the whole number (rounding 0.5 upward) nearest to the specified percentage of the number of teams entered in the regatta, but never less than 2 points.

### Deductions from Damage Deposits

The assessment of damage level is only for the purpose of points penalties, and is not linked to any deductions from the competitor's damage deposits.

Any points penalty will be based on the assessment of damage level made on the water. Subsequent assessments of the damage level after closer inspection, whether the level turns out to be higher or lower, will have no effect on the points penalty given on the water.

## **SI ATTACHMENT E - Event Format**

### **E1 GENERAL**

- E1.1 The RC will decide which boats are to be used for each race and when they decide a boat should not be used, the team assigned that boat will be given the temporary use of another boat.
- E1.2 The number of races to be sailed each day will be determined by the RC.
- E1.3 The RC may change the format, terminate any round or the event when, in its opinion, it is impracticable to attempt to hold the remainder of races under the existing conditions or in the remaining time scheduled. Early stages may be terminated in favor of later stages.
- E1.4 If the RC terminates a round before it is completed, and teams in the round have not sailed the same number of races, ranking the teams will be handled as follows (changes RRS A2 and A8).
  - (a) A team's ranking will be based on the team's average points (total points divided by the number of races the team has sailed).
  - (b) If two or more teams have the same average points, the tie will be broken by:
    - (1) if the teams involved in the tie have raced the same number of races, RRS A8 will apply.
    - (2) otherwise, RRS A8.2 only will apply.

### **E2 STAGE 1 - Qualifying Rounds**

- E2.1 Stage 1 is scheduled to consist of two rounds of races with 8 teams competing in each race.
- E2.2 The teams will rotate so that, at the end of each round, each team will have raced 8 races.
- E2.3 The boat assignments and racing schedule are contained in SI Attachment F (to be distributed at the morning briefings).
- E2.4 A team's score in the stage will be the sum of all her race scores in the stage. This changes RRS A2.
- E2.5 After stage 1, the top 4 teams will advance to stage 3. The remaining teams will advance to stage 2.

### **E3 STAGE 2 - Repechage Round**

- E3.1 Stage 2 is scheduled to consist of a series of 6 races among the teams from stage 1 that did not directly qualify for stage 3.
- E3.2 The teams will begin this stage with points based on their rank in stage 1 (1 point for the top ranked remaining team, 2 points for next best, etc. with the last ranked team receiving 9 points to start Stage 2).
- E3.3 A team's score at the completion of Stage 2 will be the total of her score from E3.2 and all her race scores in stage 2. This changes RRS A2.
- E3.4 If two or more teams are tied, the tie will be broken in accordance with RRS A8 using teams' scores from stage 2 only, with the starting points (E3.3) counting as one race. This changes RRS A8.
- E3.5 The top 4 teams after stage 2 will advance to stage 3.
- E3.6 For the remaining teams, their final ranking from this stage will determine their final places beginning with 9th.

### **E4 STAGE 3 - Championship Round**

- E4.1 Stage 3 will consist of a series of races with 8 teams competing in each race.
- E4.2 The top 4 teams after stage 1 will begin stage 3 with points equal to their rank in stage 1 (1 point for 1st, 2 points for 2nd, etc.). The best scoring team from stage 2 will begin with 5 points, and the second-best scoring team will begin with 6 points.
- E4.3 A team's score will be the total of her score from E4.2 and all her race scores in stage 3. This changes RRS A2.
- E4.4 If two or more teams are tied, the tie will be broken in accordance with RRS A8 using teams' scores from stage 3 only, with the starting points (E4.2) counting as one race. This changes RRS A8.
- E4.5 The final ranking for this stage will determine 1st through 8th place in the regatta

