



## Sailing Instructions

posted June 23, 2018

*The notation [NP] in a rule means, that the rule shall not be grounds for protest by a boat; and [DP] in a rule means that the penalty for a breach of that rule may, at the discretion of the protest committee, be less than disqualification.*

### 1. Rules

- 1.1 The regatta will be governed by the rules as defined in *The Racing Rules of Sailing* (RRS).
- 1.2 The following documents shall apply:
  - 1.2.1 US Sailing Regulation 10 - Prohibited Substances. An alleged breach of US Sailing Regulation 10 shall not be grounds for a protest by another boat. However, when a protest committee believes that a competitor may have breached Regulation 10.03 it shall follow the process described in the [Championships Code of Conduct](#).
  - 1.2.2 The [Conditions for the Youth Championship](#) and the [US Sailing Championship Conditions](#).
  - 1.2.3 The US Sailing [Championship Coaching and Support Boat Policy](#). This will be a Grade 1 Coaching event.
  - 1.2.4 US Sailing [SafeSport Program Handbook](#)
- 1.3 Appendix B – Windsurfing Competition Rules shall apply for the windsurfing events, except as changed by the NOR or these SIs.
- 1.4 Appendix P – Special Procedures for Rule 42 shall apply for the 29er, I 420, Laser, Nacra 15 and Radial classes.
- 1.5 RRS 40 will be changed so that each competitor shall wear a USCG approved life jacket that is 100% dependent on foam for flotation and the appropriate size for the sailor, at all times while on the water, except for brief periods while adding or removing clothing. [NP]
- 1.6 RRS 60.1(a) is changed to add: prohibit a boat from protesting another boat for an alleged breach of any class rule other than class equipment measurement rules. [NP]
- 1.7 RRS 77 – Identification on Sails is changed so that a boat is not required to display national letters. However, competitors shall be required to comply with applicable class sail numbering rules, and female entrants in Laser Radial, International 420, and Techno 293 Plus classes, are required to display a red rhombus on their sails. [NP] [DP]
- 1.8 RRS 44.1 and P 2.1 are changed for the 29er and Nacra 15 classes so that the Two-Turns penalty is replaced by a One-Turn Penalty.
- 1.9 Attachments C and D - Instructions for Coaches, Support and Spectator Boats.

## 2. RECALL NUMBERS [DP] [NP]

Two digit recall numbers for the International 420 and Laser Radial classes will be issued at registration and shall be displayed as per the instructions provided at registration. These recall numbers will be used in place of sail numbers in the case of the RC notifying BFD boats after a general recall or an abandonment. This changes RRS 30.4.

The recall numbers for the 29er, Laser, Nacra 15 and Techno 293 Plus classes will be their sail number. It is the responsibility of each competitor to properly display the issued number during the regatta.

## 3. NOTICES TO COMPETITORS

- 3.1 Notices to competitors (including protest notifications) will be posted on the official notice board located in the breezeway outside the club office. In addition, the organizing authority will attempt to text message notices to competitors as possible.
- 3.2 All questions to the race committee, protest committee, or organizing authority must be made in writing and will be posted and answered on the official notice board.

## 4. CHANGES TO SAILING INSTRUCTIONS

- 4.1 Changes to the SIs will be posted no later than 30 minutes after the close of the morning competitors' meeting on the day it takes effect, except that any change to the schedule of races will be posted no later than 1900 the day before a change will take effect.
- 4.2 Oral changes to the SIs may be given on the water. The race committee signal boat shall display code flag "L" and **competitors shall approach the signal boat and receive the oral change while code flag "L" is displayed** in accordance with RRS 90.2(c).

## 5. SIGNALS MADE ASHORE

- 5.1 Signals made ashore will be displayed from the flagpole near the Sound-side Gazebo.
- 5.2 Code flag "L", when displayed ashore signifies that a change in the SIs or other notice to competitors has been posted on the official notice board.
- 5.3 When flag "AP" is displayed ashore, the warning signal for the next race will be made not less than 60 minutes after AP is lowered. This changes RRS Race Signals.

## 6. SAFETY [DP] [NP]

- 6.1 All competitors are required to "chip out" and "chip in" anytime they are on the water. This includes any practice or other activities. If scanner is not available or a competitor is going out alone, they must notify a dock master before launching.
- 6.2 Any boat retiring from racing shall notify any race committee vessel before leaving the course and check-in with any dockmaster immediately upon arrival onshore.

## 7. FORMAT OF RACES

All events are open to male and female competitors. Double-handed events may be sailed with mixed teams.

## 8. SCHEDULE

Saturday, June 23rd		location
1200 – 1800	Registration	Main Ballroom
1700	Mandatory Coaches Meeting	Main Ballroom

<b>Sunday, June 24th</b>		
0800 - 0900	Registration	Main Ballroom
0930	Mandatory Competitors Meeting	Main Ballroom
1000	Mandatory Spectator Boat Meeting	Main Ballroom
1200	Warning Signal for both courses	
<b>Monday, June 25th</b>		
0900	Mandatory Competitors Meeting	Main Ballroom
1100	Warning Signal for both courses	
<b>Tuesday June 26th</b>		
0900	Mandatory Competitors Meeting	Main Ballroom
1100	Warning Signal for both courses	
<b>Wednesday, June 27th</b>		
0900	Mandatory Competitors Meeting	Main Ballroom
1100	Warning Signal for both courses	
1430	No Warning Signal after 1430	
As soon as possible	Boat pack up & Awards Ceremony	Main Ballroom

8.1 Fourteen (14) races are scheduled for the 29er and Nacra 15 classes. Twelve (12) races are scheduled for the Techno 293, Laser, Radial and I 420 classes. The race committee may run fewer races at its discretion.

## 9. CLASS FLAGS

The class flags are as follows:

<b>Class</b>	<b>Class Flag</b>
Laser	White flag with a red Laser insignia
Radial	Yellow flag with a red Laser insignia
I 420	Red, white, and blue with I 420 insignia
29er	White flag with a red 29er insignia
Techno 293	Numeral pennant 1
Nacra 15	White flag with blue and black Nacra insignia

## 10. RACING AREA

10.1 The racing area is in the Atlantic Ocean, just offshore of the Carolina Yacht Club. See Attachment A.

10.2 Boats transiting to and from Circle A shall stay clear of Circle B.

## 11. THE COURSES

11.1 The diagrams in Attachment B show the courses, including the order in which marks are to be passed. All rounding marks shall be left to port, except Marks 3S/3P and Marks 4S/4P which are gates.

11.2 The race committee signal boat shall post the course to be sailed on a white board or placard.

11.3 If one of the gate marks is missing, the mark in position will be rounded to port.

## 12. MARKS

Circle A	Mark 1, 2, 3s & 3p	Marks 4s and 4p	Start Line Mark	Finish Line Mark	New Mark 1 or 2	Offset Mark 1a
Laser, Radial, I 420	Yellow tetrahedron	Orange tetrahedron	White sphere	Orange sphere	Orange cylinder	White sphere

Circle B	Mark 1	Mark 4s, 4p	Start Line Mark	Finish Line mark	New Mark 1
29er / Nacra	Yellow tetrahedron	Orange tetrahedron	White sphere	Orange sphere	Orange cylinder
Techno 293 Plus	Green tetrahedron	Orange tetrahedron	White sphere	Orange sphere	Yellow tetrahedron

## 13. THE START

- 13.1 Races will be started using RRS 26.
- 13.2 For **Circle A**, the **Laser, Radial and I 420 classes**, the starting line will be between a staff displaying an orange flag on the race committee signal boat and a staff displaying an orange flag on the pin boat or the course side of the nearby white sphere inflatable mark.
- 13.3 For **Circle B**, for the **29er, Techno 293 and Nacra 15 classes**, the starting line will be between a staff displaying an orange flag on the race committee signal boat and a staff displaying an orange flag on the pin boat or the course side of the nearby white sphere inflatable mark..
- 13.4 To alert boats that a race will begin soon, the orange line flag on the signal boat will be displayed with multiple sounds, at least four (4) minutes before the warning signal is displayed.
- 13.5 In addition, the race committee will attempt to post a boat's recall number in the event they are scored as OCS or UFD. This is a courtesy only and failure of the race committee to make this posting shall not be grounds for redress.
- 13.6 A boat starting later than four (4) minutes after her starting signal will be scored DNS. This changes RRS 35 and A5.

## 14. COURSE CHANGES

- 14.1 To change the next leg of the course, the race committee will (a) lay a new mark, (b) move the finishing line, or (c) move the leeward gate (original marks). When a new mark is laid, the original mark will be removed as soon as possible. When in a subsequent change a new mark is replaced, it will be replaced by an original mark.
- 14.2 The race committee may make minor adjustments in the course without signaling a change of course. This changes RRS 33.

## 15. THE FINISH

- 15.1 For **Circle A**, the finishing line will be between a staff displaying an orange flag on the finish line boat and a staff displaying an orange flag on the pin boat or the course side of the nearby orange sphere as described in SI 12 and as shown in Attachment B.
- 15.2 For **Circle B**, for Course L, the finish line will be between a staff displaying an orange flag on the starboard side of the signal boat and a staff displaying an orange flag on the pin boat or the course

side of the nearby orange sphere as described in SI 12 and as shown in Attachment B.

- 15.3 For **Circle B**, for Course W, the finish line will be between a staff displaying an orange flag on a race committee boat and a staff displaying an orange flag on the pin boat or the course side of the nearby orange sphere as described in SI 12 and as shown in Attachment B.

**16. TIME LIMITS (minutes)**

Class	Time limit	Mark 1 time limit	Finish window
Laser, Radial, I 420	65	20	15
29er, Techno 293, Nacra15	65	20	15

- 16.1 If no boat has passed Mark 1 within the Mark 1 Time Limit, the race shall be abandoned.  
 16.2 Boats still racing and failing to finish within 15 minutes after the first boat in their class sails the course and finishes will be scored TLE and will be scored 2 more points than the last finisher within the finish window in that race. This changes RRS 35, A4.2, A5 and A11.

**17. PROTESTS AND REQUESTS FOR REDRESS**

- 17.1 A boat intending to protest about an incident that occurs in the racing area shall notify the race committee finish boat of their intention as soon as possible after finishing, identifying the boat(s) being protested. This adds to RRS 61.1(a).  
 17.2 Protest forms will be available at the protest desk in the main office.  
 17.3 The protest time limit is forty five (45) minutes after the race committee finish boat docks.  
 17.4 The protest hearing schedule and the location of the hearings will be posted on the official notice board no later than 30 minutes after the protest time limit.  
 17.5 Notice of actions taken by the race committee (shown in the posted results) or protest committee and a list of boats penalized under Appendix P will be posted on the official notice board.  
 17.6 On the last day of the regatta, a request for redress of a protest committee decision or scoring error shall be delivered within the protest time limit or within 30 minutes of the decision or results being posted, whichever is later. This changes RRS 62.2.

**18. SCORING**

- 18.1 The Low Point System of Appendix A will apply with the following changes:  
 (a) When fewer than five (5) races have been completed, a boat's series score will be the total of her race scores.  
 (b) When five (5) or more races have been completed, a boat's series score will be the total of her race scores excluding her worst score.  
 18.2 For the Techno 293, changes to RRS A8 (series ties) in Appendix B8 shall not apply.  
 18.3 Three (3) races are required to be completed to constitute a series.

**19. REPLACEMENT OF CREW OR EQUIPMENT [DP]**

Substitution of competitors, or repair or replacement of hulls, sails, or equipment will not be allowed without prior written approval of the organizing authority. See [US Sailing Championship Conditions](#).

**20. COACH, SPECTATOR AND SUPPORT VESSELS [DP] [NP]**

- 20.1 This is a Grade 1 Event as defined in the US Sailing [Championship Coaching and Support Boat Policy](#).

20.2 Private Spectator Boats will be permitted. All spectator boats must fly a supplied flag when near the course area. A regatta supplied spectator boat may be available for at least one day of racing.

20.3 Please refer to Attachments C and D for further instructions and specific conditions.

**21. DISPOSAL OF TRASH [DP]**

Boats shall not purposefully discharge trash into the water.

**22. ELECTRONIC COMMUNICATION [DP]**

A competitor shall not send or receive electronic communications from the time he or she leaves the dock until after the last race of the day.

**23. DISCIPLINE [DP] [NP]**

23.1 Competitors are considered to be attending the championship from the moment that they arrive at the venue until they leave the venue for home or the airport.

23.2 Per US Sailing Regulations 10.03 B, no contestant shall use, either on or off the water, marijuana or any other substance if possession is illegal under state or federal law; or any alcoholic beverages. This regulation shall be in effect from date and time of arrival through date and time of departure from the locale and including transport to and from the locale. An alleged breach of one of these regulations shall not be grounds for a protest. However, when the protest committee believes that a competitor may have breached one of these regulations, it shall follow the process described in the Championships Code of Conduct. If a competitor found to have breached one of the elements within the Code of Conduct, they shall be excluded from the remaining races of the series and, where practicable, removed from the regatta venue and sent home. The competitor's boat shall be disqualified from all races of the series.

23.3 All competitors are expected to maintain the highest level of conduct throughout the entire event. RRS 60.3 is modified to permit the protest committee to protest a boat when, from its own observations or a report received from any source, it believes that a competitor may have committed a breach of good manners, or sportsmanship, or may have brought the sport or the event into disrepute. RRS 64.1 is changed to allow penalties for breaking this provision to range from a reprimand to a dismissal from the regatta. For a hearing under this provision, the protest committee shall call the Youth Championship Committee (YCC) Chairperson or his or her designee and the Regatta Chairperson as witnesses.

**24. PRIZES**

24.1 Depending on class size, US Sailing Championship medals may be awarded to competitors who finish first through fifth overall in classes greater than 25 and first through third overall in classes greater than ten. In classes with ten or less, first and second will be awarded.

24.2 The Manton D Scott Memorial Trophy will be awarded to the winning Doublehanded Dinghy (I 420) team.

24.3 The Robert L. Johnstone III Trophy will be awarded to the winning Open Singlehanded (Laser Standard) competitor.

24.4 The Robert and Ann Conner Trophy will be awarded to the winning Singlehanded – Light (Laser Radial) competitor.

24.5 The Major Hall Trophy will be awarded to the winning Windsurfing competitor.

24.6 The Arthur J. Stevens Trophy will be awarded to the winning Multihull team.



24.7 The David M. Perry Perpetual Sportsmanship Trophy will be awarded, as well as sportsmanship keepers, in each class.

24.8 International Travel Grants- made possible by the US Sailing Foundation.

The top two doublehanded teams or singlehanded sailors, as well as the top two female doublehanded teams or singlehanded sailors, in each fleet at the 2018 Youth Champs are eligible for travel grants of up to \$500 per athlete to an international competition (outside of North America) in 2019, subject to approval. Eligible sailors will be required to submit details of the international competition and a training plan to US Sailing ([championships@ussailing.org](mailto:championships@ussailing.org)) for approval by April 1<sup>st</sup>, 2019.

## **25. RISK, DISCLAIMER OF LIABILITY & PERSONAL CONDUCT**

25.1 Competitors participate in the regatta at their own risk. See RRS 4 (Decision to Race). The organizing authority will not accept any liability for material damage or personal injury or death sustained in conjunction with or prior to, during, or after the regatta.

25.2 The competitor will accept full responsibility for all his/her actions during any activity related to the event. This includes on-shore activities before, during, and after the regatta.

25.3 All competitors are expected to maintain the highest levels of conduct throughout the entire event. Enforcement of discipline and conduct shall be conducted as per RRS 69.1, the Championships Code of Conduct and/or the policies and procedures of US Sailing (Regulation 15.01).

### **FURTHER INFORMATION**

All official notices, forms, lists and results will be posted on the US Sailing website:  
<https://www.ussailing.org/competition/championships/u-s-youth-championship/>

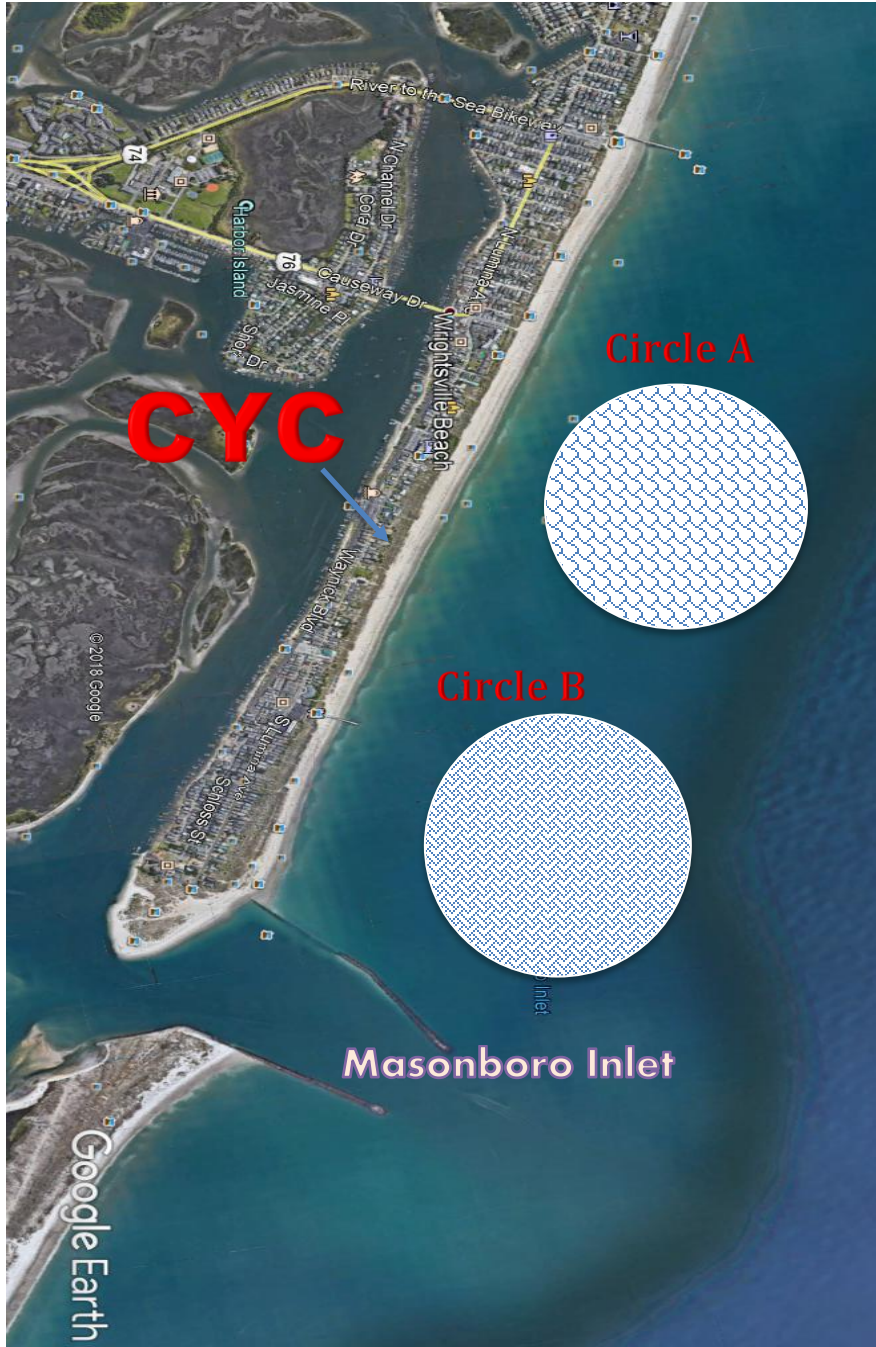
US Sailing Youth Development Manager, Meredith Carroll, US Sailing, 1 Roger Williams University Way, Bristol, RI 02809, (401)342-7900, or [championships@ussailing.org](mailto:championships@ussailing.org)

US Sailing Youth Championships Committee Chair, Malinda Crain at [usyouthchamps@gmail.com](mailto:usyouthchamps@gmail.com).



# U.S. YOUTH CHAMPIONSHIP

## ATTACHMENT A – Venue





## ATTACHMENT B – Courses

### I

**Course: Inner Trapezoid**

Signal	Mark Rounding Order
I2	Start – 1 – 4s/4p – 1 – 2 – 3p – Finish
I3	Start – 1 – 4s/4p – 1 – 4s/4p – 1 – 2 – 3p – Finish
I4	Start – 1 – 4s/4p – 1 – 4s/4p – 1 – 4s/4p – 1 – 2 – 3p – Finish

### O

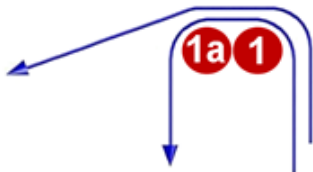
**Course: Outer Trapezoid**

Signal	Mark Rounding Order
O2	Start – 1 – 2 – 3s/3p – 2 – 3p – Finish
O3	Start – 1 – 2 – 3s/3p – 2 – 3s/3p – 2 – 3p – Finish
O4	Start – 1 – 2 – 3s/3p – 2 – 3s/3p – 2 – 3s/3p – 2 – 3p – Finish



# U.S. YOUTH CHAMPIONSHIP

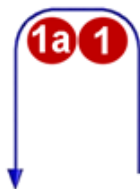
## IA



Course: Same As Course I Except With Offset Mark 1A

Signal	Mark Rounding Order
<u>IA2</u>	Start - 1 - 1a - 4s/4p - 1 - 1a - 2 - 3p - Finish
<u>IA3</u>	Start - 1 - 1a - 4s/4p - 1 - 1a - 4s/4p - 1 - 1a - 2 - 3p - Finish
<u>IA4</u>	Start - 1 - 1a - 4s/4p - 1 - 1a - 4s/4p - 1 - 1a - 4s/4p - 1 - 1a - 2 - 3p - Finish

## LA



Course: Same As Course L Except With Offset Mark 1A

Signal	Mark Rounding Order
<u>LA2</u>	Start - 1 - 1a - 4s/4p - 1 - 1a - Finish
<u>LA3</u>	Start - 1 - 1a - 4s/4p - 1 - 1a - 4s/4p - 1 - 1a - Finish
<u>LA4</u>	Start - 1 - 1a - 4s/4p - 1 - 1a - 4s/4p - 1 - 1a - 4s/4p - 1 - 1a - Finish



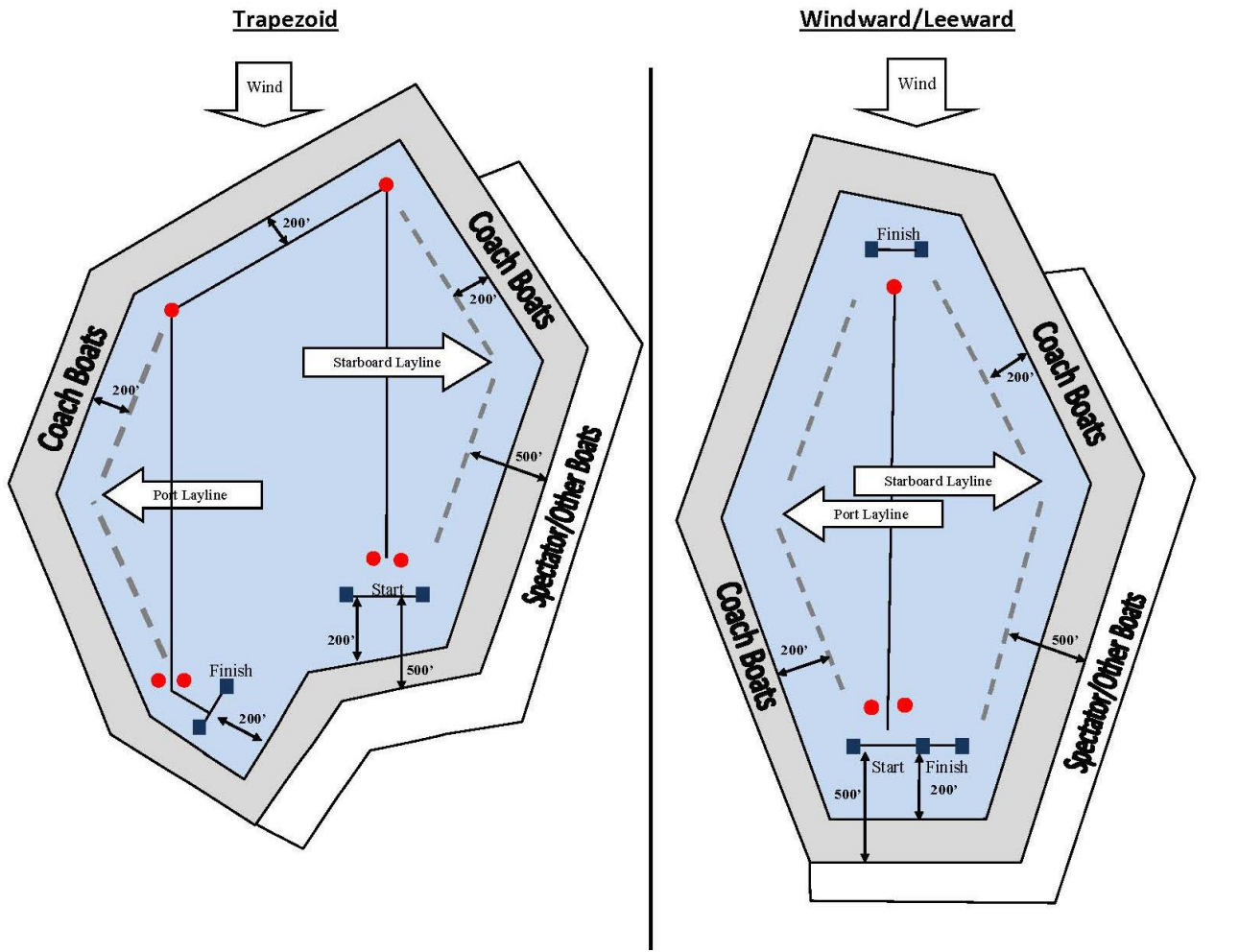


# U.S. YOUTH CHAMPIONSHIP

## Attachment C Position Boxes for Coaches and Spectators

Coach Boats – 200' from laylines / above windward mark / below start-finish areas

Spectator / Support Boats – Limited to starboard side of the course - 500' from laylines / below windward mark / below start finish areas





## Attachment D **Instructions for Coach, Support and Spectator Boats**

The objectives of these SI provisions are to augment the safety resources attached to the regatta and to provide a clear and fair racing area.

**From the warning signal for the first class' start until the conclusion of each race, all coach boats and support boats shall observe the limitation areas in Attachment C, the [US Sailing Championships Coaching and Support Boat Policy](#) and as spelled out in this document.**

(1) A coach boat is authorized by the organizing authority to provide athlete support. Coach boat occupants must meet the requirements of the [US Sailing Championships Coaching and Support Boat Policy](#). The boat shall display the numbered coach flag assigned at registration.

(2) A support boat is authorized by the organizing authority to be in the racing area to provide safety, medical, water, photographic or other assistance to competitors as requested by the race committee. They will be assigned a numbered flag.

(3) A spectator boat (those boats not designated as race committee, coach or support) is in the racing area for the purpose of observing racing. At no time shall spectator boats enter the area being used by the racing boats. A spectator boat must stay 500 feet outside the race course and is limited to the right side of the course, as shown in Attachment C. The boat shall display the numbered spectator flag assigned at registration.

All coach and spectator boats must register through the event registrar. Private coaches wishing to be part of the event must also register with the US Sailing head coach and agree to work under their direction and be a member of the overall event coaching team.

All designated coach, support and spectator boats shall conspicuously display, at all times while on the water, the flag assigned to them. Additionally, from the first preparatory signal of the day until racing concludes, coach, spectator and support boats shall display no other flag, signal or shape.

Coach, support and spectator boats shall monitor the VHF channel as provided by the race committee at the competitors' meeting and shall immediately follow all instructions from the race committee and the organizing authority. At no time shall any spectator, coach or support boat interfere in the conduct of the race. At no time during a race shall any competitor approach or signal a coach or spectator boat, nor shall a coach or spectator boat approach or signal any competitor.

**The race committee reserves the right to restrict coach boats and spectator boats to a box below the starting line for the entire race and / or make any other rules to ensure the quality of the racing and the safety of the competitors.**