



**U.S. Offshore Championship  
for the Lloyd Phoenix Trophy  
Organizing Authority: US Sailing  
Hosted by Naval Academy Sailing Squadron  
Sponsored by Gill North America  
SAILING INSTRUCTIONS  
September 21 - 24, 2017**



### **1. Rules**

1.1 This regatta will be governed by The Racing Rules of Sailing (RRS), the prescriptions of US Sailing and US Sailing Championship Committee Conditions, the current Championship Conditions, except as these are changed by the Notice of Race (NoR) and the Sailing Instructions(SI).

1.2 In the event of a conflict between the Notice of Race and the Sailing Instructions, the Sailing Instructions will govern. This changes rule 63.7.

1.3 All U.S competitors shall wear a U.S. Coast Guard approved PFD at all times while on the water except while adding or removing clothing, as specified in US Sailing regulation 10.01D. Competitors from outside the U.S. may wear a PFD approved by their nations' certification authority to the extent permitted by international treaty.

1.4 After sunset, when two boats on the same tack are within three boat lengths of each other, the boat clear ahead may not sail above her proper course, and the boat clear astern, if she elects to pass to windward, must do so at least two of those boat lengths from the leeward boat.

### **2. Entries**

Entries have been selected by US Sailing in conformance with the Conditions for the National Offshore Championship.

### **3. Notices to Competitors**

Notices will be posted on the Official Regatta notice board in the first floor classroom at Robert Crown Sailing Center.

### **4. Changes to the Sailing Instructions**

Any change to the Sailing Instructions will be posted on the Official Regatta notice board before the Skippers' Meeting on the day it will take effect, except that any change in the schedule of races, other than substituting buoy races for the distance race, will be posted by 1900 on the day before it will take effect.

### **5. Signals made Ashore**

5.1 Signals made ashore will be displayed on the flagpole in front of the Robert Crown Sailing Center.

5.2 Flag "AP" with two horns means racing is postponed. Do not leave Santee Basin. The time of the warning signal will be posted and announced before lowering flag "AP" with one horn. This changes AP in Race Signals.



## 6. Event Schedule and Races

### 6.1 Schedule as follows:

#### **Thursday 21 September:**

- 1600 Mandatory practice sail with safety officer
- 1900 Welcoming Reception for crew / Navigation Safety Meeting for skipper and navigator at the Robert Crown Sailing Center

#### **Friday 22 September:**

- 0830 Skippers' Meeting/continental breakfast at the Robert Crown Sailing Center
- 1000 Warning Signal-first race of the day. Up to 2 buoy races, followed by a medium distance race.
- 1700 Awards and post race social.

#### **Saturday 23 September:**

- 0830 Skippers' Meeting/continental breakfast at the Robert Crown Sailing Center
- 1000 Warning Signal-first race of the day. One buoy race may be held, followed by a distance race.
- 1700 Awards and post race social.

#### **Sunday 24 September:**

- 0830 Skippers' Meeting/continental breakfast at Robert Crown Sailing Center
- 1000 Warning Signal-first race of the day. Two buoy races may be held.
- 1500 Awards at the Robert Crown Sailing Center.

Note: No warning signal will be made after 1400 on Sunday 24 September.

6.2 In the event that weather conditions preclude running one or both of the distance races, buoy races may be substituted. Up to four buoy races may be run on a day and no more than nine buoy races will be run in the regatta. This would change SI 6.1 and SI 22. If necessary, the Race Committee may hoist flag "LIMA" and move to a location appropriate for buoy races.

6.3 In the event that weather conditions allow, distance races may be substituted for one or more of the buoy races. Up to two distance races may be run on a day and no more than five distance races will be run in the regatta. This changes SI 6.1 and SI 22. If a second distance race is to be run, the Race Committee will display flag "DELTA" at the finish on the first distance race. If flag "DELTA" is displayed, competitors should remain in the vicinity of the finish area for the next start.

6.4 The schedule of races may be changed to make up any races necessary.

## 7. The Start

7.1 Before a boat's first race of the day each boat shall sail astern of the Race Committee signal boat on starboard tack and hail her sail number until acknowledged by the committee.

7.2 The class flag will be a green flag with a white diagonal stripe.

7.3 The starting line will be between the luff of the orange flag on the committee boat and the course side of the port end starting mark.

7.4 A stand-off mark may be deployed from the signal boat and shall be considered part of the signal boat.

## **8. Recalls**

The Race Committee will attempt to inform boats on the course side of the starting line by VHF radio on Channel 77. Failure to hear or receive such transmission will not be grounds for redress requests. This changes rule 62.

## **BUOY RACES**

### **9. Racing Areas**

9.1 The racing areas for buoy races are shown in Illustration "A" attached. The buoy racing areas are Area 1 between Tolly Point and Thomas Point and Area 2 east of Greenbury Point.

9.2 The initial racing area will be posted daily on the Official Notice board prior to the Skippers' Meeting.

### **10. The BUOY RACE Courses**

10.1 The diagrams in Attachment "A" describe the buoy racing windward leeward courses.

10.2 No later than the warning signal the Race Committee will display the course to be sailed and post the magnetic bearing from the leeward mark to the weather mark.

10.3 The weather mark shall be rounded to port.

10.4 A leeward gate (two marks) may be used in place of a leeward mark. The Race Committee boat will hoist flag "GOLF" prior to the warning to signal a gate mark course. Except when there is a change of course, the gate will be located approximately 100 yards to windward of the starting line. Boats shall sail between the gate marks from the direction of the previous mark and round either gate mark. If one of the leeward gate marks is missing, boats shall round the one existing leeward mark to port.

10.5 The weather finish line will be located approximately 100 yards upwind from the weather mark, unless there has been a course change on the final leg.

### **11. Marks**

11.1 The start and finish marks will be orange cylinders. The windward and leeward marks will be orange tetrahedrons.

11.2 When changing the next leg of the course, the new mark, unless the change is for the final leg of the course, will be a yellow gumdrop with black band.

### **12. Change of the Next Leg of the Course**

To change the next leg of the course the Race Committee will set a new mark (or move the finish line) and remove the original mark as soon as practicable. In a subsequent change a new mark is replaced, it will be replaced by an original mark.

### **13. The Finish**

13.1 The finish line will be between the luff of the orange flag displayed on the race committee boat and the course side of the nearby finishing mark.

13.2 A stand-off mark may be deployed from the finish boat and shall be considered part of the finish boat.

### **14. Time Limits**

14.1 The time limit for the buoy races will be two hours. If no boat finishes within two hours, the race will be abandoned.

14.2 A race will be abandoned if the lead boat has not reached the second mark within 60 minutes after the start.

14.3 Any boat not finishing within 20 minutes of the first boat to finish will be scored TLE (Time Limit Expired). This changes rule A4.1.

## **DISTANCE RACES**

### **15. Course Location**

15.1 The Race Committee will indicate the intention to run a distance race by hoisting flag "DELTA".

15.2 If a distance race follows a buoy race, remain in the vicinity of the finish area of the buoy race.

15.3 If the distance race is the first race of the day rendezvous at the yellow NOAA weather buoy FI Y 4s "AN". This location will be posted on the Official Notice board prior to the Skippers' meeting.

15.4 Racing will be in the Chesapeake Bay.

15.5 The Prohibited Areas on Illustration A do not apply to the distance race while racing.

### **16. Distance Courses**

16.1 COURSE D-1: (Approximate distance: 13 NM)

Start

Mark "ECHO" (if used)

Can SR to port

R "86" to port

R "2" to port

Finish at Robert Crown Sailing Center

16.2 COURSE D-2: (Approximate distance: 17 NM)

Start

Mark "ECHO" (if used)

Can SR to starboard

G "1" to port

R "86" to port

R "88" to port

R "2" to starboard

Finish at the Robert Crown Center

16.3 COURSE D-3: (Approximate distance: 18 NM)

Start

Mark "ECHO" (if used)

FL G "91" to port

Center span of the Chesapeake Bay Bridge

Morse A "LP" to starboard

Center span of the Chesapeake Bay Bridge

R "2" to starboard

Finish at Robert Crown Sailing Center

16.4 COURSE D-4: (Approximate distance: 18 NM)

Start

Mark "ECHO" (if used)

Special A to port

Special B to port

Center span of the Chesapeake Bay Bridge

Morse A "LP" to starboard



Center span of the Chesapeake Bay Bridge  
R "2" to starboard

Finish at Robert Crown Sailing Center

16.5 COURSE D-5: (Approximate distance: 18 NM)

Start

Mark "ECHO" (if used)

R "2" to port

R "86" to port

R "90" to port

R "2" to starboard

Finish at Robert Crown Sailing Center

16.6 COURSE D-6: (Approximate distance: 18 NM)

Start

Mark "ECHO" (if used)

R "86" to starboard

G "1" to starboard

Can SR to port

R "88" to port

R "2" to starboard

Finish at Robert Crown Sailing Center

16.7 COURSE D-7: (Approximate distance: 22 NM)

Start

Mark "ECHO" (if used)

R "84" to port

R "86" to port

Finish at R "2"

16.8 COURSE D-8: (Approximate distance: 25 NM)

Start

Mark "ECHO" (if used)

R "84" to port

R "86" to port

R "2" to Port

Finish at the Robert Crown Center

16.9 COURSE D-9 (Approximate distance 25 miles)

Start

Mark "ECHO" (if used)

R "84A" to starboard

G "1" to starboard

R "86" to port

R "2" to port

Finish at Robert Crown Sailing Center

16.10 COURSE D-10 (Approximate distance 27 miles)

Start

Mark "ECHO" (if used)

R "86" to starboard

G "1" to port

R "84A" to port

Can SR to starboard



R "88" to port

R "2" to starboard

Finish at Robert Crown Sailing Center

16.11 COURSE D-11: (Approximate distance: 29 NM)

Start

Mark "ECHO" (if used)

R "82" to port

R "84" to starboard

R "86" to port

Finish at R "2"

16.12 COURSE D-12: (Approximate distance: 33 NM)

Start

Mark "ECHO" (if used)

R "82" to port

R "84" to starboard

R "86" to port

R "2" to Port

Finish at the Robert Crown Center

**NOTE** - On all courses, Tolly Point "1AH", Thomas Point Lighthouse, Bloody Point Bar Lighthouse, Dolphins "A" and R "4" in Annapolis Harbor, G "5" in Annapolis Harbor, and Horn Point Shoal Bar "HP" marker shall be passed on the channel side.

16.13 No later than the warning signal the Race Committee will hoist flag "DELTA" and a numeral pennant to designate the distance course. Any of the courses described above may be used.

16.14 The Race Committee may set an additional first mark "ECHO" to provide for a windward start. If mark "ECHO" is used the Race Committee will hoist flag "ECHO", plus either a red or green flag. The red flag signals that mark "ECHO" shall be left to port. The green flag indicates mark "ECHO" shall be left to starboard.

16.15 The approximate distance and compass bearing to mark "ECHO" will be displayed on a board on the Race Committee boat.

16.16 The distance race may be shortened at any rounding mark.

## 17. Marks

17.1 The starting mark will be an orange cylinder.

17.2 Mark "ECHO", if used, will be an orange tetrahedron.

17.3 The marks to be used in the distance races are listed in Attachment D.

## 18. Finish

18.1 The finish at R "2" will be between the mark and adjacent Race Committee boat. If the race Committee boat is not present, competitors should record their own time when the mark bears 000 magnetic at a distance of less than 25 yards. Competitors are requested to note the boat in front and boat behind when finishing.

18.2 The finish at the Robert Crown Sailing Center is the course side of the line between the orange flag displayed on the flag pole in front of the Robert Crown Center and yellow can buoy "C" located approximately 100 yards northeast of Robert Crown Sailing Center in the Severn River.

## **19. Time Limits**

19.1 The time limit for any distance race will be 2200. If no boat has finished within the time limit, the race will be abandoned.

19.2 For the distance race, any boat not finished within 90 minutes of the first finisher will be scored TLE (Time Limit Expired).

## **20. Protests and Requests for Redress**

20.1 The red flag and the yellow flag shall be flown from the backstay

20.2 Rule 61.1(a) is changed by adding: "A boat displaying a red flag and intending to protest shall inform the race committee signal boat as soon as possible after finishing by hail or VHF call on the channel 77 until acknowledged. The hail shall include the sail number or boat name of the protested boat."

20.3 Protests forms are available at the Offshore Sailing Team Office. Completed protest forms should be delivered to the Protest Committee as soon as possible or within 30 minutes after the signal boat docks except for any Distance Race protests must be lodged within 30 minutes of the finish time of the last boat of the day to finish. The protest filing time will be posted on the Official Regatta notice board.

20.4 The Protest Committee will hear protests in approximately the order of receipt as soon as possible. Protest notices will be posted on the Robert Crown Sailing Center first floor classroom notice board within 30 minutes of the protest time limit to inform competitors when there is a hearing in which they are parties to a hearing or named as a witness. The hearings will be held in the Robert Crown Sailing Center Library upstairs from the lobby.

20.5 On the last day of the regatta a request for reopening a hearing shall be delivered within the protest time limit if the party requesting reopening was informed of the decision on the previous day, or no later than 30 minutes after the party requesting reopening was informed of the decision on that day. This changes rule 66.

20.6 On the last scheduled day of racing a request for redress based on a protest committee decision shall be delivered no later than 30 minutes after the decision was posted. This changes rule 62.2.

## **21. Penalty System**

21.1 The Scoring Penalty, rule 44.3, will apply. The penalty will be 2 places.

21.2 RRS 44.3 Scoring Penalty is changed by adding (d) A boat that complies with any part of the requirements of RRS 44.3 will be scored with a 50% penalty unless she complies with all of the requirements.

## **22. Scoring**

22.1 The Low Point Scoring System, Appendix A, will apply. Each boat's score in the distance race(s) will be multiplied by a factor of 2x. This modifies Appendix A 2. Each boat's series score will be the total score of all her races. There will be no discards. This modifies Appendix A 4.1

22.2 Seven races, unless modified by SI 6.2, are scheduled of which three shall be completed to constitute a championship.

22.3 Boats scored TLE (Time Limit Expired) shall be awarded two points more than the number of finishers but in no case more than the number of starters. This changes rules 35, A4 and A5.

## **23. Radio Communications**



23.1 While racing, any VHF radio onboard shall only be tuned to VHF channels 9, 13, 16, 77, 82A or a weather channel. Except in the case of an emergency, a boat shall neither make radio transmissions nor receive special communications not available to all boats. This restriction also applies to mobile telephones. VHF radio channel 82A should be used for exiting and entering Santee Basin. On the long distance race, at all times while racing boats shall set their VHF radio to scan between channels 13, 16, and 77.

23.2 VHF radio channel 77 may be used by the Race Committee to supplement communications regarding sail restrictions, the course to be sailed, course changes, etc. as a courtesy only. Failure of the Race Committee to make a broadcast shall not be grounds for redress requests under rule 62.1(a).

#### **24. Breakdowns**

RRS 62.1 is changed by adding: "(e) breakdown of a borrowed boat or equipment".

A boat intending to request redress for a breakdown may do so by displaying a blue streamer from her backstay at the earliest opportunity after the incident and by notifying the Race Committee at the finish."

#### **25. Boats and Equipment**

25.1 The Navy 44s will be used for the competition.

25.2 In addition to the equipment provided on the boats, competitors shall provide their own PFDs as required in NoR 15, and may bring a bowman's harness, handheld GPS, navigation equipment, typical ditty bag contents, a topping lift pennant (16') and any other personal safety equipment. Other equipment (including such items as winch handles, light air spinnaker sheets or sail turtles) are not permitted to be brought onboard.

25.3 All standing rigging will be preset before the regatta to make the boats as evenly matched as possible. Standing rigging, with the exception of the backstay, shall not be adjusted or modified without authority of the Race Committee. Bottom cleaning of any kind is not allowed. Equipment, as outlined in Attachment B, "NAVY 44 SET-UP and PROCEDURES", will not be moved unless in use. The foreguy may be rigged to a 1:1 ratio. Competitors shall not modify the boats or cause them to be modified in any way including cleaning the hull, except that:

- a) telltales may be added, but may not be sewn through any sail
- b) adhesive tape may be added, but must be removed at the end of each day
- c) all fittings or equipment designed to be adjusted may be adjusted with the exception of standing rigging.

25.4 Attachment B, "NAVY 44 SET-UP and PROCEDURES", lists requirements for sails, equipment and instruments in addition to those listed in this sailing instruction. Except when a boat is anchored, neither anchor shall be moved from its supplied position.

25.5 Backstays may not be tensioned beyond 2,500 pounds.

25.6 Swimming from the boats is not permitted. Bottom cleaning of any type or banding of the propeller is not allowed.

25.7 Boats must race with eight crew members, one of whom is the assigned Naval Academy Midshipmen (8 total).

25.8 All sails and equipment provided with the boat for this regatta shall be carried on board.

25.9 The penalty for infringement of the above instructions may be disqualification from all races sailed in contravention of the instructions.

25.10 Competitors shall fill out and return the "Navy 44 Inventory" checklist AND the "Securing the Navy 44" checklist AND shall report any damage or loss of equipment, however slight, to the Offshore Sailing Office immediately after securing the boat ashore each day. The penalty for





infringement of this instruction, unless the Protest Committee is satisfied that the competitor made a determined effort to comply, will be disqualification from the race most recently sailed.

## **26. Repairs or Replacement of Equipment**

Boats may request assistance from the repair boat between races for replacement or repair of equipment by displaying the blue breakdown streamer from the backstay in accordance with SI 24 and calling the repair boat on VHF radio Channel 77. The repair boat will be on station near the start/finish line.

## **27. Avoiding Collisions**

27.1 Any collision will be considered serious.

27.2 Every effort to avoid a collision must be made in a timely manner.

## **28. Boat Assignments and Rotation**

28.1 Boats and sails have been assigned as indicated in Attachment E, "Boat Rotation". Boats will be rotated after racing on Friday and Saturday as indicated on the Boat Rotation Sheet. There will not be any on the water rotation.

28.2 Teams will be assigned a #1 genoa with a letter designator, a racing spinnaker (not lettered) and a backup spinnaker. These three sails shall be carried with competitors to each subsequent boat.

## **29. Sail Limitations**

Should conditions require, the Race Committee may limit the use of sails by displaying the flags as indicated below. These signals will be made prior to the Warning Signal. Generally, these restrictions will be applied to prevent damage to equipment while keeping racing equitable.

No signal Use either #1 or #3, NO other restrictions

W USE #3 JIB

R ONE REEF IN MAIN

K NO SPINNAKERS

## **30. Crew Substitution:**

The list of the seven designated crew members sailing in the regatta must be submitted no later than 15:00 hours on September 20, 2017 to Ken Morrison and Jahn Tihansky at [Tihansky@usna.edu](mailto:Tihansky@usna.edu). All registered crew, including the midshipman, shall sail in all races unless the Protest Committee or Organizing Authority approves a substitute as discussed in <http://www.ussailing.org/racing/championships/championship-conditions/>. The Protest Committee or Organizing Authority may approve a substitution if they determine an emergency situation exists that justifies the substitution.

## **31. Code of Conduct**

31.1 No alcoholic beverages are allowed on any Naval Academy boat or anywhere on Academy grounds except at sanctioned social events.

31.2 Per US Sailing Regulation 10.03, for adult US Sailing Championship events, no competitor shall use or possess, either on or off the water: marijuana or any other substance if possession is illegal under state or federal law.

31.3 An alleged breach of one of these regulations shall not be grounds for a protest. However, when the protest committee believes that a competitor may have breached one of these regulations, it shall follow the process described in the Championships Code of Conduct. If a



competitor found to have breached one of the elements within the Code of Conduct, they shall be excluded from the remaining races of the series and, where practicable, removed from the regatta venue and sent home. The competitor's boat shall be disqualified from all races of the series.

31.4 All competitors will be required to sign the Code of Conduct at registration.

## **32. Safety**

32.1 Each competitor is solely responsible for his or her personal safety. However, in circumstances it considers hazardous, the Race Committee may require a competitor to accept assistance.

32.2 A boat that retires from a race shall notify the Race Committee promptly.

32.3 All competitors shall sign the standard liability waiver provided with these sailing instructions and turn it into the Offshore Office before going afloat on the first day of the regatta.

32.4 If there is an injury to any crew member, assistance may be obtained immediately by hailing the Race Committee on VHF radio Channel 77. In the event of an injury, a boat may request permission to make a crew substitution or to sail with fewer crew. Such request shall be submitted in writing to the Protest Committee or Race Committee except that the request may be made orally to the Race Committee while afloat.

32.5 Per US Sailing Regulation 10.01D Competitors in US Sailing championships or qualifiers for US Sailing championships shall wear a U.S. Coast Guard (USCG) approved personal floatation device (PFD) while on the water, other than for brief periods while adding or removing clothing. Competitors from outside the U.S. may wear a PFD approved by their nations' certification authority to the extent permitted by international treaty. Failure to comply with this rule may result in disqualification as deemed appropriate by the Protest Committee.

32.6 For Boats on the water after 1830, all crewmembers shall wear provided safety harnesses with tethers, or their own OSR or US Sailing approved equipment, and they shall be connected to the boat except for brief periods when changing position. Violations of the SI will not be subject to protest by a competitor.

32.7 All Navy 44s are equipped with AIS. It is mandatory to have the AIS turned on at all times after exiting the Santee Basin until return to the Santee Basin.

## **33. Support Boats**

33.1 This is a Grade 3 coaching event as outlined as outlined at <http://www.ussailing.org/racing/championships/coaching-and-support-boat-policy/>

## **34. Commercial Traffic**

34.1 A boat may not exercise right of way, cross in proximity to, or interfere with reasonable transit of the race area by commercial freighters, tugs and tows or other commercial vessels that are unable to respond readily. A boat protested under this rule has the burden of proof that she did not interfere. Boats shall take evasive action well in advance of any potentially dangerous situation. Only the Race Committee or Protest Committee may protest under this sailing instruction, and may base such a protest on information received from competitors or other interested parties. This changes rules 60.2(a) and 60.3(a). The penalty for breaking this rule is at the discretion of the Protest Committee.

34.2 A boat without way in a ship channel that breaks rule 42.1 by using an engine to clear the channel at the approach of commercial traffic, shall either retire or if the incident was

unavoidable, continue racing and request redress. Rule 62 is changed to allow consideration of this request.

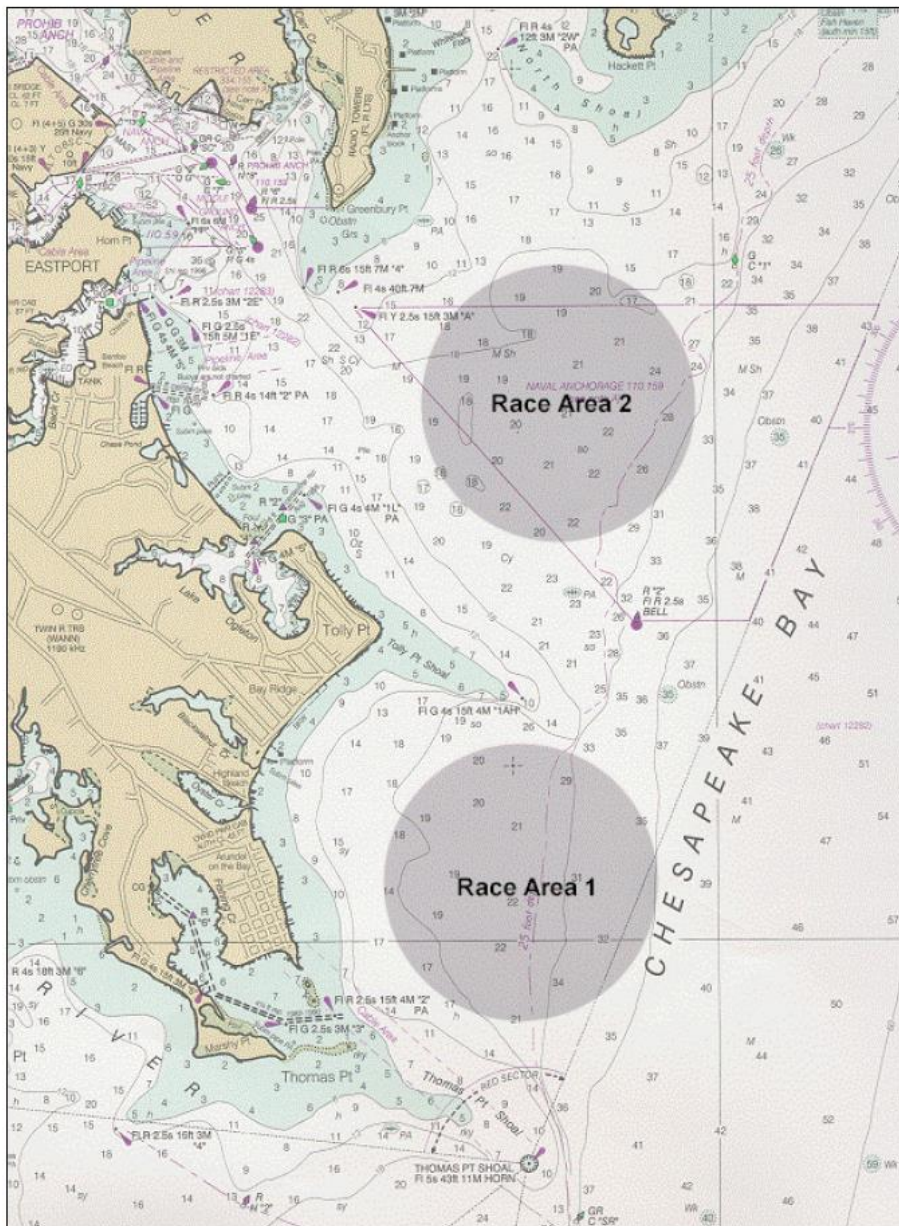
**35. Prizes**

35.1 US Sailing medals will be awarded to the top three teams.

35.2 The winning team will be presented the Lloyd Phoenix Trophy which will remain at the Robert Crown Center.

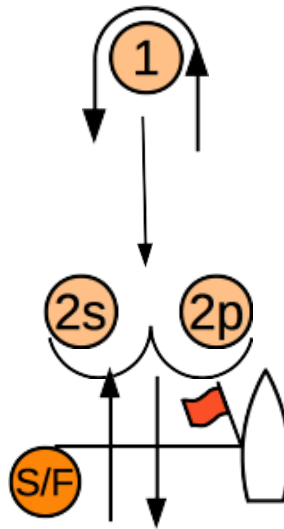
35.3 Daily prizes will be awarded for daily overall race winners.

ILLUSTRATION "A"



**Attachment #A - BUOY RACE COURSE ILLUSTRATIONS**

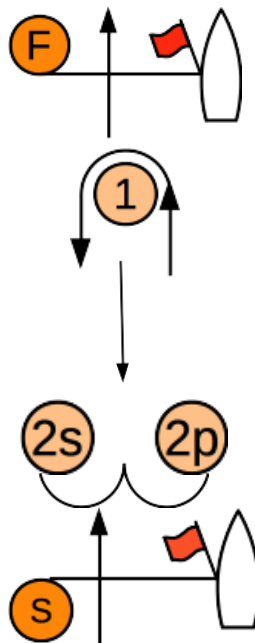
Course L2: Start-1-2s/2p-1-Finish



Course W2: Start-1-2s/2p-Finish

Course W3: Start-1-2s/2p-1-

2s/2p-Finish



The course designation is followed by the mark rounding order for that course. If the Race Committee displays flag GOLF near the course designation board then 2s and 2p will be set. All marks except 2s are to be rounded to port.



## **ATTACHMENT "B" - NAVY 44 SET-UP and PROCEDURES**

### **SAILS:**

1. All of the Navy 44's are equipped with the following racing sails:
  - MAIN (numbered – stays with boat)
  - #1 GENOA (lettered – rotates with you each day)
  - #3 JIB (no number – stays with boat)
  - #4 JIB (no number – stays with boat)
  - 1 oz. SPINNAKER (rotates with you each day)
  - Back-up Spinnaker (rotates with you each day)
2. While racing, sails may also be stored on the main cabin floor or by the aft bunk.
3. The lettered #1 Genoa and both SPINNAKERS will remain with the team and should be rotated at the end of racing on each day to your next boat. All other sails shall stay on the boat.

### **SPINNAKER:**

1. Be especially careful when dropping the jib after a spinnaker set as the hanks may tear the spinnaker!
2. Banding the spinnaker is not allowed due to environmental concerns on the Chesapeake Bay.
3. Spinnaker AFTERGUY BLOCKS MUST be placed in the second hole aft of the center stanchion (by shrouds) and tied to the upper lifeline.

### **EQUIPMENT:**

1. ALL SUPPLIED EQUIPMENT AND GEAR other than that used for trimming or adjusting sails SHALL REMAIN in the position you found it unless you receive permission from the Race Committee to move it with the exception of the foreguy that may be re-rigged as permitted by SI 25.3. Any loose books, charts, paper work may be stowed in the navigation table or placed on the adjacent shelves.
2. While racing, when not in use, one anchor shall be stored hanging on the forward bulkhead in forward compartment . The other anchor shall be stored in the port cockpit locker. When you first board your boat, both anchors will be stored in the proper location and shall not be moved unless anchoring.
3. All personal gear may be stowed as you please.

### **INSTRUMENTS:**

1. Instruments have been calibrated before the regatta to make the boats as even as possible. Every effort has been made to make them accurate, but you are advised that they should only be used for relative measurements. The only instruments you are allowed to use are the following:
  - VHF Radio tuned to channel 82A, 77, 16, 13 or to the weather station
  - Depth Sounder: SET to read in FEET from surface (Navy 44 draws approx. 8'0")
  - ANY other instruments as allowed in SIs or instructed at the skippers' meeting.

### **LEAVING/ENTERING SANTEE BASIN:**

1. Engine Logs must be on board the boat and filled out prior to getting under way.
2. When ready to leave your slip or re-enter the basin, call Santee Basin Control on VHF 82A and say:
3. "Santee Basin Control, this is NA- #\_\_\_, boat name \_\_\_\_\_, requesting permission to exit/enter the basin. Over."
4. They will respond giving you permission to exit/enter the basin, but may ask you to exit/enter after another boat. Reply "This is NA-#, boat name, Roger. Out."



**DOCKING THE BOAT:**

1. When you return to Santee Basin, dock your boat in the same slip you were in at the beginning of the day.
2. Complete the daily checklist for SECURING THE NAVY 44's supplied at the skippers' meeting.

**MATERIAL ALREADY ON THE BOATS:**

Competitors shall take all flags and charts with them from boat to boat during the regatta and return them to the OFFSHORE OFFICE at the end of racing on Sunday. All other materials shall be left aboard.

**FEATHERING THE PROP:**

1. Power at 4-5 knots in forward
2. Shut down the engine using the stop button with shifter still engaged in forward
3. When the engine has stopped, if the shaft is still spinning, engage the transmission in reverse to stop the free spinning
4. You can check to see if the propeller is feathered or not by taking the engine out of gear. If the propeller is not feathered, the shaft will spin freely as with a fixed blade propeller. In that case, start the engine again and repeat the above steps
5. Once the propeller is feathered, you can leave the transmission in or out of gear
6. BANDING the propeller is NOT allowed.

**USING THE HEAD:**

1. Put INLET Seacock Handle (forward valve under floorboard adjacent to head door) to VERTICAL
2. VALVE for "overboard/tank" ( located in compartment under sink) must be set for "tank"
3. FLUSH thoroughly (10 pumps)
4. WHEN DONE: Put INLET seacock handle back down in the closed position

**WATER:** There is NO drinking water onboard. BRING your own drinking water.

**MISC. SET-UP:** Suggested rigging tips:

1. The forward headsail TACK SHACKLE is preferred
2. The INNER FORESTAY should lead aft through the guide on the port side of the mast and attach to the fitting beneath the vang.
3. Jib Sheets for the #3 and #4 Jibs normally are led outside the forward lower shroud and inside the upper and aft lower shroud.



ATTACHMENT "C" Government Marks used in the Distance Races  
*Descriptions and positions are shown for the purposes of identification only.*

**NOT FOR NAVIGATIONAL USE.**

Mark	Description	Approximate Position
R "2"	Approx 1 NM East of Tolly Point	38 56.500N/076 25.480W
R "82"	Approx 3.5 NM South of Poplar Island	38 42.040N/076 25.280W
R "84"	Approx 1 NM West of Poplar Island	38 45.460N/076 25.100W
R "84 A"	Approx 1.75 NM Northwest of Poplar Isl	38 47.590N/076 24.700W
R "86"	Approx 2 NM North of Bloody Point Light	38 52.020N/076 23.530W
R "88"	Brickhouse Bar off Kent Island	38 56.150N/076 22.910W
G "91"	Approx .6 NM South of Main Span Bay Bridge	38 58.986N/077 23.256W
R "90"	Approx 1.3 NM South Main Span Bay Bridge	38 58.290N/076 23.320W
G "1"	Approx 2.2 NM Northeast of Curtis Point	38 51.860N/076 26.990W
Can "SR"	Approx 0.3 NM SE Thomas Point Light	38 53.640N/076 25.87W
	Center Span Chesapeake Bay Bridge	38 59.550N/076 22.950W
	Morse A "LP" Approx 2 NM West of Love Point	39 02.620N/076 20.770W
	NOAA weather buoy	38 57.780N/076 26.850W
	Dolphin "A"	38 58.010N/076 27.150W
	Dolphin "4"	38 58.100N/076 27.460W
	Shoal Marker "HP"	38 58.400N/076 28.150W
	Severn River G "5"	38 58.300N/076 27.720W
	Robert Crown Yellow Can "C"	38 58.970W/076 28.640W
	Special A yellow gumdrop inflatable 1.6 NM W/SW Main Span Bay Bridge	38 58.800N/76 24.800W
	Special B yellow gumdrop inflatable 1 NM W/SW Main Span Bay Bridge	38 59.000N/76 24.130W

ATTACHMENT "D" BOAT ROTATION

Available at Registration