



## 2005 Rolex Miami OCR

23 January – 28 January 2005

Organizing Authority: Rolex Miami OCR Committee

Host National Authority: US SAILING

Miami, FL USA



### SAILING INSTRUCTIONS



#### 1 RULES

- 1.1 The regatta will be governed by the 'rules' as defined in Racing Rules of Sailing 2005 – 2008.
- 1.2 The US SAILING prescriptions to rules 68, 76.1, and added rule 76.3 will apply and are stated in full in paragraph 24. No other prescriptions of US SAILING will apply.
- 1.3 Appendix P, Immediate Penalties for Breaking Rule 42, will apply. Paragraph P1 is changed to allow protest notification by sail number or bow number.
- 1.4 With the approval of the classes, Finn Class Rule 5.7.1 and 470 Class Rule 26.2 are changed as follows:
  - (a) When the race committee displays flag O no later than the warning signal and it remains displayed at least until the starting signal, pumping, rocking and ooching are allowed as specified in the class rules.
  - (b) After the starting signal, when the race committee displays flag O with repetitive sounds at any rounding mark, then pumping, rocking and ooching are allowed as specified in the class rules. This instruction applies to a boat after she has passed the mark.
  - (c) If the race committee has acted under instruction 15.4 or 15.5 and the wind speed becomes less than the limit specified in the class rules, the race committee may display flag R with repetitive sounds at any rounding mark to signal that rule 42, as changed by the class rules, applies. This instruction applies to a boat after she has passed the mark.
  - (d) When flag O or flag R is displayed with a class flag, it applies to that class only.
- 1.5 This will be a Sonar Class Appendix B event.
- 1.6 Star and Yngling Olympic crew weight regulations apply, but are changed so that there will be weighing at registration only.
- 1.7 Beginning 1100 hours on Monday, January 24, until after the final race of the regatta, Ynglings and Sonars shall not haul out without the written permission of the jury.
- 1.8 ISAF eligibility code (ISAF Regulation 19) and class eligibility requirements apply.
- 1.9 Olympic Gender requirements will apply for each Olympic Event. Men and mixed teams are not eligible to compete in Women's events. Women and mixed teams are not eligible to compete in Men's events.
- 1.10 In the Sonar and 2.4 meter classes, both disabled and able bodied teams will be eligible to compete.
- 1.11 Boats shall not discharge trash into Biscayne Bay or the Atlantic Ocean.

## **2 NOTICES TO COMPETITORS**

- 2.1 Notices to competitors will be posted on the official notice board on the first floor of the US Sailing Center. Notices may also be posted on the US SAILING web site at: <http://www.ussailing.org/olympics/RolexMiamiOCR/> and through electronic display and/or supplemental posting at the locations shown in Table 1.
- 2.2 The regatta office is located on the second floor of the US Sailing Center.

## **3. CHANGES TO SAILING INSTRUCTIONS**

- 3.1 Any change to the sailing instructions will be posted before 0830 on the day the change will take effect, except that any change in the schedule of races (other than as provided in SI 3.2) will be posted by 2000 hrs on the day before the change will take effect.
- 3.2 Changes to the assignment of classes to racing areas will be posted before 0830 on the day the change will take effect, or if AP is displayed ashore, 30 minutes prior to the removal of AP.

## **4. SIGNALS MADE ASHORE**

- 4.1 Signals made ashore will be displayed with the applicable class flag(s) from the flagpole at the locations listed in Table 1. If no class flag is displayed, the signal will apply to all classes assigned to that location.
- 4.2 When flag AP (Answering Pennant) is displayed ashore, "1 minute" is replaced with "not less than 90 minutes" in Race Signals: AP.
- 4.3 When flag AP (Answering Pennant) over H is displayed ashore, it means, "No boat shall leave the harbor. Wait for further instructions." This changes Race Signals, AP over H.

## **5. SCHEDULE OF RACES**

- 5.1 The schedule of races is shown in Table 1.
- 5.2 Races not sailed on the scheduled day may be sailed on a following day at the discretion of the race committee. There will be no more than 3 races sailed on any one day for any class.
- 5.3 On the last day of the regatta no warning signal will be made after 1530 hrs.
- 5.4 The Men's and Women's 470 classes will start and sail all races as a combined fleet.

## **6. CLASS FLAGS**

Class flags will be the class logo (insignia) on a white background except for the Laser Radial, which will be the class logo (insignia) on a green background.

## **7. RACING AREAS**

- 7.1 Illustration A, attached, shows the location of the racing areas. The course assignments for each class are shown in Table 1.
- 7.2 The race committee may change the assignment of classes to racing areas. See SI 3.2.

## **8. THE COURSES**

- 8.1 The diagrams in Illustration B show the courses and course designations, including the approximate angles between legs, the order in which marks are to be passed, and the side on which each mark is to be left.
- 8.2 The course designation and approximate compass bearing to the first mark will be displayed on placards from the race committee signal boat no later than the warning signal for each class/start.
- 8.3 For the 49er class, Mark 1A on all course diagrams is not a mark of the course.

## 9. MARKS

9.1 Marks will be as shown below:

| Course  | Marks 1, 1A, 2, 3, and 4 | Starting Marks | Finishing Marks |
|---------|--------------------------|----------------|-----------------|
| Alpha   | Orange                   | Yellow         | Yellow          |
| Bravo   | Yellow                   | Orange         | Orange          |
| Charlie | Orange                   | Yellow         | Yellow          |
| Delta   | Orange                   | Yellow         | Yellow          |
| Echo    | Orange                   | Yellow         | Yellow          |
| Foxtrot | Yellow                   | Orange         | Orange          |

9.2 New marks, as provided in SI 13 -CHANGE OF THE NEXT LEG OF THE COURSE, will have black bands.

9.3 For the 2.4 mR class, when the class flag is flown over a solid colored flag at the warning signal, Mark 1 will be a tetrahedron of the same color as the flag. If this alternate Mark 1 is used, Mark 1A will not be used.

## 10. MANDATORY CHECK-IN FOR ALL BOATS

Before the first warning signal of the first race a boat sails each day, each boat shall sail past the stern of the race committee signal boat in her racing area, and hail her sail or race committee assigned number until acknowledged by the race committee.

## 11. BOAT IDENTIFICATION (Star Class)

11.1 Bow numbers will be provided to boats in the Star class.

11.2 The bow numbers shall be affixed vertically both port and starboard in the following way:

- (a) The leading edge of the forward number shall be 30 cm aft of the stem and even with the deck.
- (b) The leading edge of the aft number shall be 5 cm aft of the aft edge of the forward number and even with the deck.

## 12. THE START

12.1 Races will be started by using rule 26.

12.2 The starting line will be between a staff displaying an orange flag on the race committee signal boat, and either the course side of the port end starting mark or a staff displaying an orange flag on a race committee boat at the port end of the line.

12.3 The race committee signal boat may deploy a stand-off buoy attached to the boat. If so, the starting mark shall be the combination of the race committee boat and the stand-off buoy. Any competitor that hits either the committee boat or the stand-off buoy, or passes between them, breaks rule 31.1 (TOUCHING A MARK).

12.4 During a starting sequence, boats whose warning signal has not been made shall avoid the starting area.

12.5 A boat starting later than 5 minutes after her starting signal will be scored Did Not Start. This changes rules 63.1, A4, and A5.

## 13. CHANGE OF THE NEXT LEG OF THE COURSE

13.1 Changes of the next leg of the course will be signaled in accordance with rule 33. To change the next leg of the course, the race committee will lay a new mark (or move the finishing line) and remove the old mark as soon as practicable. When in a subsequent change, a new mark is replaced; it will be replaced by an original mark.

## 14. THE FINISH

The finishing line will be between a staff displaying an orange flag on a race committee boat and either the course side of the finishing mark or a staff displaying an orange flag on a race committee boat at the other end of the finishing line.

## **15. PENALTY SYSTEM**

- 15.1 Rules 44.1 and 44.2, the Two-Turns Penalty, will apply.
- 15.2 For the Tornado and 49er classes only, rules 44.1, 44.2, and P2.1 are changed so that the penalty is one turn, including one tack and one gybe.
- 15.3 Penalties for breaking SI 1.7, 1.8, 1.9, 4.3, 10, 11, 12.4, 20 and 21 may be less than disqualification at the discretion of the jury.

## **16. TIME LIMITS**

- 16.1 Time limits are stated in Table 2.
- 16.2 If no boat has passed Mark 1 for the first time within the mark 1 time limit shown in Table 2, the race will be abandoned.
- 16.3 Boats that fail to finish within the time labeled as “finish window” in Table 2 after the first boat in her class sails the course and finishes will be scored Did Not Finish. This changes rules 35, 63.1, A4, and A5.

## **17. PROTESTS AND REQUESTS FOR REDRESS**

- 17.1 Protest forms are available at the jury office at the US Sailing Center. Protests shall be delivered there within the protest time limit.
- 17.2 The protest time limit for each class is shown in Table 2 in minutes after the race committee docks. The race committee signal boat docking time and protest time limit for each fleet will be posted on the official notice board and the supplemental notice board listed in Table 1.
- 17.3 Notices will be posted within 30 minutes of the protest time limit to inform competitors of hearings in which they are parties or named as witnesses. Hearings will be held at the US Sailing Center.
- 17.4 Notices of protests by the race committee under rule 60.2(a) or protest committee under rule 60.3(a) will be posted to inform boats under rule 61.1(b).
- 17.5 Hearings may be scheduled to begin up to 30 minutes prior to the end of protest time.
- 17.6 A boat breaking SI 1.8, 10, 11, 20, or 21 will not be grounds for a protest by a boat. This changes rule 60.1(a).

## **18. SCORING**

- 18.1 The Low-Point Scoring System of rule Appendix A as changed below will apply. Four races are required to be completed to constitute a series.
- 18.2 When fewer than 5 races have been completed in any series, a boat's series score will be the total of her race scores. When from 5 to 13 races have been completed, a boat's series score will be the total of her race scores excluding her worst score. When 14 or more races have been completed, a boat's series score will be the total of her race scores excluding her two worst scores.
- 18.3 For the 470s, Appendix A4.1 is changed such that a boat's race scores will be based on their overall finishing place in the combined fleet. Series scores will be calculated for the combined fleet, and for Men's and Women's classes separately.

## **19. PRIZES**

Medals will be presented to the top three boats in each Olympic Event and the top three boats in the Sonar and 2.4mR classes.

## **20. SAFETY REGULATIONS**

- 20.1 Competitors in single-handed classes shall wear adequate personal buoyancy while on the water, other than for brief periods while adding or removing clothing.
- 20.2 A boat requesting assistance should attempt to signal by waving an extended arm.
- 20.3 A boat that retires from a race shall notify the race committee signal vessel before leaving the course, or when that is not possible, she shall notify the regatta office as soon as practicable after she returns to the harbor.

- 20.4 Boats that are not leaving the harbor to race shall inform the regatta office prior to the start of the first race of the day.

## **21. SUPPORT AND COACH BOATS**

- 21.1 Except when rendering assistance to a boat in danger at the boat's request or at the request of the race committee, support and coach boats shall stay 25 meters outside areas where boats are racing from the time of the preparatory signal for the first class to start until the time the last boat finishes or the race committee signals a postponement, general recall or abandonment.
- 21.2 Each boat carrying coaches and/or support personnel shall display an identification flag. This shall be either a numbered coach flag provided by the International Coaches Association or numbered coach identification flags provided by the organizing authority at registration.
- 21.3 All support personnel shall register at the registration offices before 1700 hours, 23 January 2005 at the US Sailing Center.
- 21.4 The penalty for failing to comply with these requirements or the verbal instructions of the race committee or the jury will be at the discretion of the jury. The penalty may be applied to any or all the boats associated with the support or coach boat.

## **22. DISCLAIMER OF LIABILITY:**

Competitors participate in the regatta entirely at their own risk. See RRS 4, Decision to Race. The organizing authority will not accept any liability for material damage or personal injury or death sustained in conjunction with or prior to during, or after the regatta.

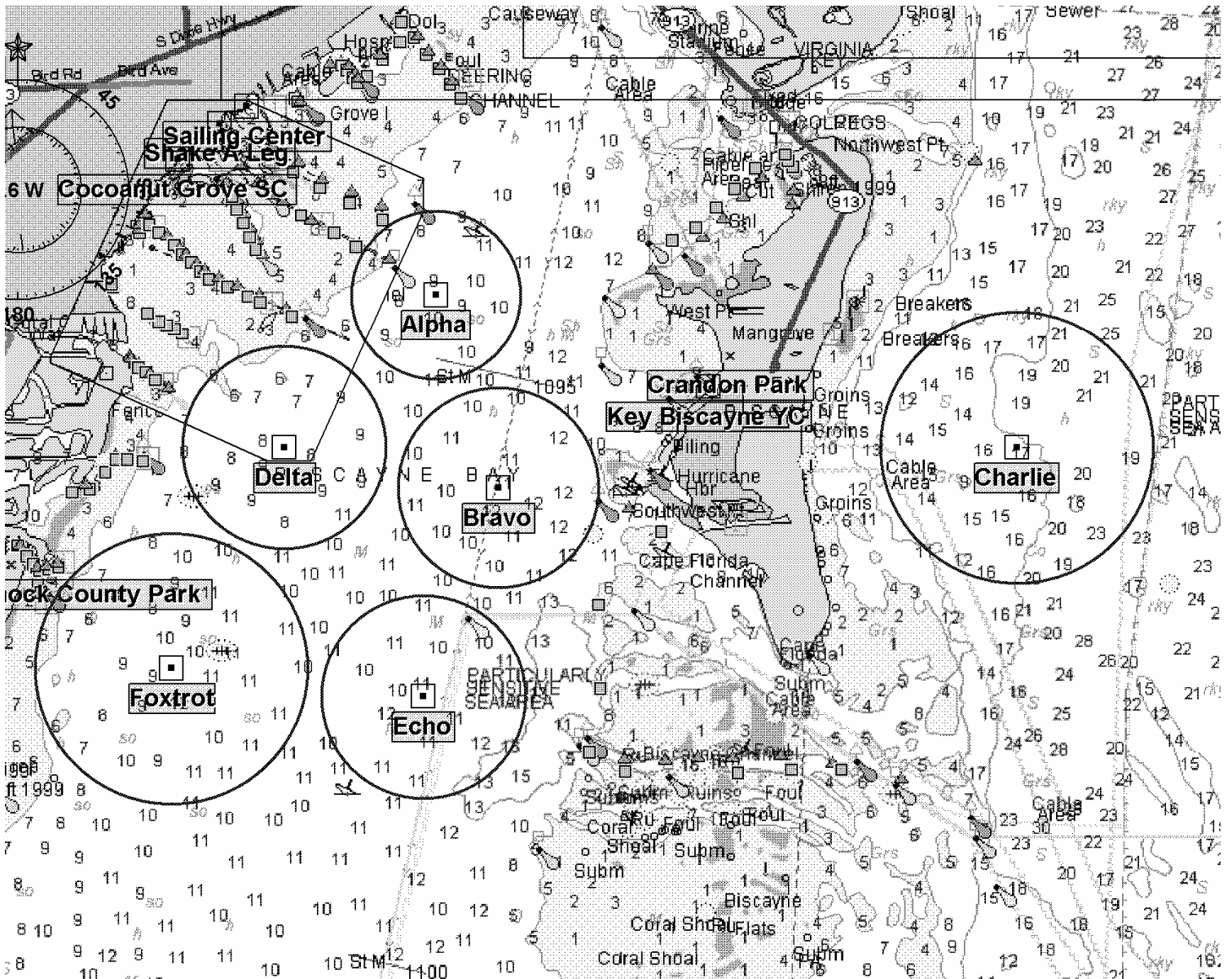
## **23. INSURANCE**

Each participating boat shall be insured with valid third-party liability insurance with a minimum cover of US\$300,000 per occurrence or the equivalent.

## **24. APPLICABLE US SAILING PRESCRIPTIONS**

- 24.1 Rule 68 DAMAGES – US SAILING prescribes that:
- (a) A boat that retires from a race or accepts a penalty does not, by that action alone, admit liability for damages.
  - (b) A protest committee shall find facts and make decisions only in compliance with the *rules*. No protest committee shall adjudicate any claim for damages. Such a claim is subject to the jurisdiction of the courts.
  - (c) A basic purpose of the *rules* is to prevent contact between boats. By participating in an event governed by the *rules* a boat agrees that responsibility for damages arising from any breach of the *rules* shall be based on fault as determined by application of the *rules*, and that she shall not be governed by the legal doctrine of 'assumption of risk' for monetary damages resulting from contact with other boats.
- 24.2 Rule 76.1 EXCLUSION OF BOATS OR COMPETITORS – US SAILING prescribes that an organizing authority or race committee shall not reject or cancel the entry of a boat or exclude a competitor eligible under the notice of race and sailing instructions for an arbitrary or capricious reason or for reason of race, color, religion, national origin, gender, sexual orientation, or age.
- 24.3 Rule 76.3 – US SAILING prescribes that a boat whose entry is rejected or cancelled or a competitor who is excluded from a race or series shall be entitled to a hearing, conducted by the protest committee under rules 63.2, 63.3, 63.4, and 63.6.

## Illustration A – Racing Areas (SI 7)



### Course Assignments:

**Alpha:** 2.4 mR & Sonar

**Bravo:** Laser & Laser Radial

**Charlie:** Tornado

**Delta:** Finn & 470 M & W

**Echo:** Yngling & 49er

**Foxtrot:** Star

**Table 1 – Course Assignments (SI 7), Supplement Notice Board (SI 2), and Schedule of Races (SI 5)**

| Class        | Course  | Supplemental Notice Board Location | Total Num Races | Time of 1 <sup>st</sup> warning signal (hrs) and number races (#) by day |   |        |   |        |   |        |   |        |   |
|--------------|---------|------------------------------------|-----------------|--|---|--------|---|--------|---|--------|---|--------|---|
|              |         |                                    |                 | Mon/24   |   | Tue/25 |   | Wed/26 |   | Thu/27 |   | Fri/28 |   |
|              |         |                                    |                 | hrs  | # | hrs    | # | hrs    | # | hrs    | # | hrs    | # |
| Sonar        | Alpha   | Shake-A-Leg                        | 10              | 1200   | 2 | 1200   | 2 | 1200   | 2 | 1200   | 2 | 1200   | 2 |
| 2.4 m        | Alpha   | Shake-A-Leg                        | 13              | 1100   | 2 | 1100   | 3 | 1100   | 3 | 1100   | 3 | 1100   | 2 |
| Laser        | Bravo   | US Sailing Center                  | 12              | 1100   | 2 | 1100   | 3 | 1100   | 2 | 1100   | 3 | 1100   | 2 |
| Laser Radial | Bravo   | US Sailing Center                  | 12              | 1200   | 2 | 1200   | 2 | 1200   | 3 | 1200   | 3 | 1200   | 2 |
| Tornado      | Charlie | Miami Yacht Club                   | 12              | 1100   | 2 | 1100   | 3 | 1100   | 3 | 1100   | 2 | 1100   | 2 |
| 470 M&W      | Delta   | Coconut Grove Sailing Club         | 13              | 1100   | 2 | 1100   | 3 | 1300   | 3 | 1300   | 3 | 1100   | 2 |
| Finn         | Delta   | US Sailing Center                  | 12              | 1000   | 2 | 1000   | 3 | 1300   | 2 | 1300   | 3 | 1000   | 2 |
| Yngling      | Echo    | Key Biscayne Yacht Club*           | 12              | 1100   | 3 | 1100   | 2 | 1100   | 3 | 1100   | 2 | 1100   | 2 |
| 49er         | Echo    | Key Biscayne Yacht Club*           | 15              | 1300   | 3 | 1300   | 3 | 1300   | 3 | 1300   | 3 | 1300   | 3 |
| Star         | Foxtrot | Coral Reef Yacht Club              | 10              | 1100   | 2 | 1100   | 2 | 1100   | 2 | 1100   | 2 | 1100   | 2 |

\* at the Ed Willman Sailing Center

**Table 2 – Target race times, race time limits (SI 16), protest filing time limits (SI 17.2)**

| Class        | Target Race Time (min) | Race Time Limits |        |               | Protest Time Limit |
|--------------|------------------------|------------------|--------|---------------|--------------------|
|              |                        | Overall          | Mark 1 | Finish Window |                    |
| Sonar        | 60                     | 90               | 30     | 30            | 90                 |
| 2.4 m        | 40                     | 60               | 20     | 30            | 90                 |
| Laser        | 60                     | 90               | 30     | 30            | 60                 |
| Laser Radial | 60                     | 90               | 30     | 30            | 60                 |
| Tornado      | 60                     | 90               | 30     | 30            | 90                 |
| 470 M&W      | 60                     | 90               | 30     | 30            | 60                 |
| Finn         | 60                     | 90               | 30     | 30            | 60                 |
| Yngling      | 60                     | 90               | 30     | 30            | 90                 |
| 49er         | 40                     | 60               | 20     | 10            | 90                 |
| Star         | 60                     | 150              | 60     | 30            | 60                 |

## Illustration B – Courses (SI 8)

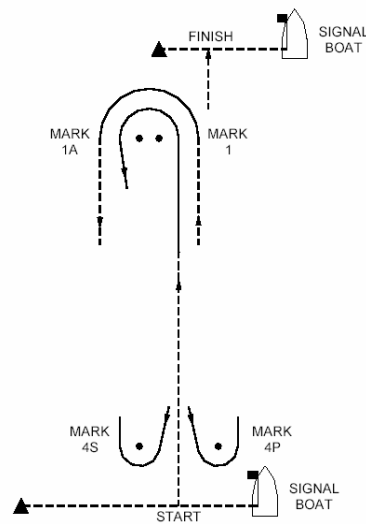
### Windward/Leeward with Finish to Windward

### Windward/Leeward with Finish to Leeward

Course Designation

**W3**

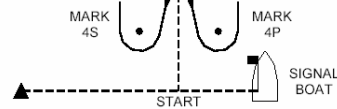
Start – 1 – 1A –  
4S/4P – Finish



Course Designation

**W5**

Start – 1 – 1A –  
4S/4P – 1 – 1A –  
4S/4P – Finish

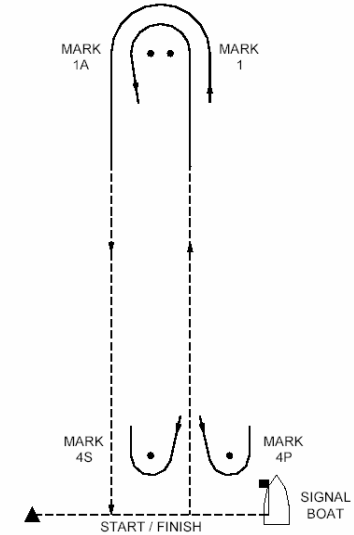


### Inner Trapezoid

Course Designation

**L4**

Start – 1 – 1A –  
4S/4P – 1 – 1A –  
Finish



Course Designation

**L6**

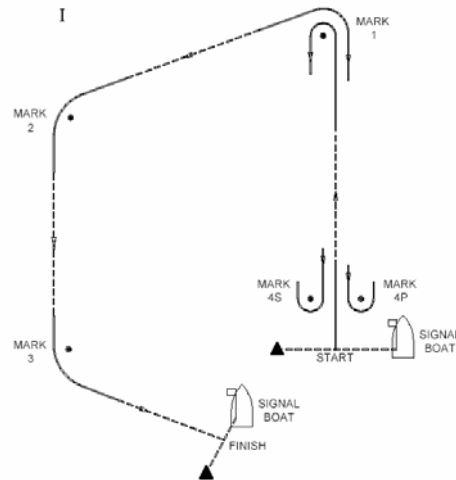
Start – 1 – 1A –  
4S/4P – 1 – 1A –  
4S/4P – 1 – 1A –  
Finish

### Outer Trapezoid

Course Designation

**I**

Start – 1 – 4S/4P –  
1 – 2 – 3 – Finish



Course Designation

**O**

Start – 1 – 2 – 3 – 2  
– 3 - Finish

